

Cytokeratin 19 (KRT19) Rabbit pAb

货号: AYP11524

产品信息

| | |
|-------|---|
| 反应 | Human,Mouse,Rat |
| 宿主 | Rabbit |
| 克隆性 | Polyclonal |
| 预测反应 | WB: HepG2 IHC: Mus musculus IF: Homo sapiens , Mus musculus FC: Mus musculus |
| 应用 | WB IHC IF/ICC |
| 推荐浓度 | WB: 1:100 - 1:500 IHC: 1:50 - 1:200 IF/ICC: 1:50 - 1:200 |
| 理论分子量 | 44kDa |
| 实测分子量 | 40KDa |
| 形式 | Liquid |
| 保存条件 | Store at -20°C. Avoid freeze / thaw cycles. Buffer: PBS with 0.02% sodium azide,50% glycerol,pH7.3. |
| 偶联物 | Unconjugated |
| 阳性对照 | Mouse lung,Rat lung |
| 细胞定位 | apicolateral plasma membrane,costamere,cytoskeleton,cytosol,extracellular exosome,plasma membrane ,sarcolemma,terminal web,Z disc |
| 纯化 | Affinity purification |

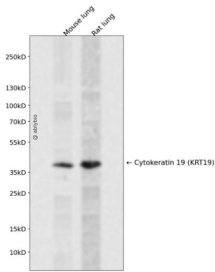
抗原信息

| | |
|------|---|
| 抗原信息 | Recombinant fusion protein containing a sequence corresponding to amino acids 241-400 of human Cytokeratin 19 (Cytokeratin 19 (KRT19)) (NP_002267.2). |
| 序列 | PGTDLAKILSDMRSQYEVMAEQNRKDAAWFTSRTEELNREVAGHTEQLQMSRSEVTDLRRTLQGLEIELQSLSMKAAL EDTLAETEARFGAQLAHIQALISGIEAQLGDVRSERQNEQYQRLMDIKSRLEQEIATYRSLLLEGQEDHYNNLSASKVL |

靶点信息

| | |
|-------|---|
| 研究背景 | The protein encoded by this gene is a member of the keratin family. The keratins are intermediate filament proteins responsible for the structural integrity of epithelial cells and are subdivided into cytokeratins and hair keratins. The type I cytokeratins consist of acidic proteins which are arranged in pairs of heterotypic keratin chains. Unlike its related family members, this smallest known acidic cytokeratin is not paired with a basic cytokeratin in epithelial cells. It is specifically expressed in the periderm, the transiently superficial layer that envelops the developing epidermis. The type I cytokeratins are clustered in a region of chromosome 17q12-q21. |
| 基因ID | 3880 |
| 基因名 | KRT19 |
| Swiss | P08727 |
| 别名 | CK19;K19;K1CS;KRT19 |

产品验证



Western blot analysis of Cytokeratin 19 (KRT19) expressed in Mouse lung,Rat lung using Cytokeratin 19 (KRT19) Rabbit pAb at 1:1000. Secondary antibody: HRP Goat Anti-Rabbit IgG (H+L) at 1:5000. Lysates/proteins: 30ug per lane. Blocking buffer: 5% non-fat dry milk in TBST. Detection: ECL Enhanced Kit. Exposure time: 120s.

实验步骤

访问官网浏览详情: www.ablybio.cn