

ENO1 Rabbit pAb

货号: **AYP11523**

产品信息

反应	Human,Mouse,Rat
宿主	Rabbit
克隆性	Polyclonal
预测反应	WB: SK-N-SH , Homo sapiens , Mus musculus IHC: Rattus norvegicus , Homo sapiens
应用	WB IHC IF/ICC IP
推荐浓度	WB: 1:1000 - 1:5000 IHC: 1:50 - 1:200 IF/ICC: 1:50 - 1:200 IP: 1:50 - 1:200
理论分子量	36kDa/47kDa
实测分子量	47KDa
形式	Liquid
保存条件	Store at -20°C. Avoid freeze / thaw cycles. Buffer: PBS with 0.01% thiomersal,50% glycerol,pH7.3.
偶联物	Unconjugated
阳性对照	HeLa
细胞定位	Cell membrane,Cytoplasm,M line,Nucleus,myofibril,sarcomere
纯化	Affinity purification

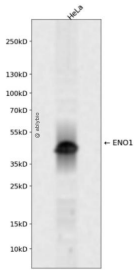
抗原信息

抗原信息	Recombinant fusion protein containing a sequence corresponding to amino acids 1-434 of human ENO1 (NP_001419.1).
序列	MSILKIHAREIFDSRGNPTVEVDLFTSKGLFRAAVPSGASTGIYEALERDNDKTRYMGKGVSKAVEHINKTIAPALVSKKLN VTEQEKIDKLMIMDGTENKSKFGANAILGVSLAVCKAGAVEKGVPLYRHIADLAGNSEVILPVPFNVINGGSHAGNKLA MQEFMILPVGAANFREAMRIGAEVYHNLKKNVIKEYGKDATNVGDEGGFAPNILENKEGLELLKTAIGKAGYTDKVVIGMD VAASEFFRSKGYDLDFKSPDDPSRYISPDQLADLYKSFIDYPVVSIEDPFDQDDWGAWQKFTASAGIQVVGDDLTVTNP KRIAKAVNEKSCNCLLLKVNQIGSVTESLQACKLAQANGWGMVSHRSGETEDTFIADLVVGLCTGQIKTGAPCRSERLAK YNQLLRIEEELGSKAKFAGRNFNPLAK

靶点信息

研究背景	This gene encodes alpha-enolase, one of three enolase isoenzymes found in mammals. Each isoenzyme is a homodimer composed of 2 alpha, 2 gamma, or 2 beta subunits, and functions as a glycolytic enzyme. Alpha-enolase in addition, functions as a structural lens protein (tau-crystallin) in the monomeric form. Alternative splicing of this gene results in a shorter isoform that has been shown to bind to the c-myc promoter and function as a tumor suppressor. Several pseudogenes have been identified, including one on the long arm of chromosome 1. Alpha-enolase has also been identified as an autoantigen in Hashimoto encephalopathy.
基因ID	2023
基因名	ENO1
Swiss	P06733
别名	ENO1;ENO1L1;HEL-S-17;MPB1;NNE;PPH;enolase 1

产品验证



Western blot analysis of ENO1 expressed in HeLa using ENO1 Rabbit pAb at 1:1000. Secondary antibody: HRP Goat Anti-Rabbit IgG (H+L) at 1:5000. Lysates/proteins: 30ug per lane. Blocking buffer: 5% non-fat dry milk in TBST. Detection: ECL Enhanced Kit. Exposure time: 120s.

实验步骤

访问官网浏览详情: www.ablybio.cn