

CYP2E1 Rabbit pAb

货号: **AYP11519**

产品信息

反应	Human,Mouse,Rat
宿主	Rabbit
克隆性	Polyclonal
预测反应	WB: Pheochromocytoma in mice , Mus musculus , Sus scrofa
应用	WB IHC IF/ICC
推荐浓度	WB: 1:500 - 1:1000 IHC: 1:50 - 1:200 IF/ICC: 1:50 - 1:200
理论分子量	56kDa
实测分子量	55KDa
形式	Liquid
保存条件	Store at -20°C. Avoid freeze / thaw cycles. Buffer: PBS with 0.05% proclin300,50% glycerol,pH7.3.
偶联物	Unconjugated
阳性对照	Rat liver
细胞定位	Endoplasmic reticulum membrane, Microsome membrane, Peripheral membrane protein
纯化	Affinity purification

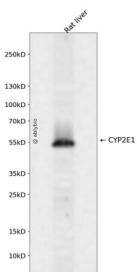
抗原信息

抗原信息	Recombinant fusion protein containing a sequence corresponding to amino acids 234-493 of human CYP2E1 (NP_000764.1).
序列	KVIKNVAEVKEYVSERVKEHHQSLDPNCPRLTDCLLVEMEKEKHSERLYTMDGITVTVADLFFAGTETTSTTLRYGLLILMKYPEIEEKLHEEIDRVIGPSRIPAIDRQEMPYMDAVVHEIQRFITLVPSNLPHEATRDITIFRGYLIPKGTVVVPTLDSVLYDNQEFDPDEKFKPEHFLNENGGFKYSDYFKPFSTGKRVCAGEGLARMELFLLLCAILQHFNLKPLVDPKDIDLSPIHIGFGCIPPRYKLCVIPRS

靶点信息

研究背景	This gene encodes a member of the cytochrome P450 superfamily of enzymes. The cytochrome P450 proteins are monooxygenases which catalyze many reactions involved in drug metabolism and synthesis of cholesterol, steroids and other lipids. This protein localizes to the endoplasmic reticulum and is induced by ethanol, the diabetic state, and starvation. The enzyme metabolizes both endogenous substrates, such as ethanol, acetone, and acetal, as well as exogenous substrates including benzene, carbon tetrachloride, ethylene glycol, and nitrosamines which are premutagens found in cigarette smoke. Due to its many substrates, this enzyme may be involved in such varied processes as gluconeogenesis, hepatic cirrhosis, diabetes, and cancer.
基因ID	1571
基因名	CYP2E1
Swiss	P05181
别名	CYP2E1;CPE1;CYP2E;P450-J;P450C2E

产品验证



Western blot analysis of CYP2E1 expressed in Rat liver using CYP2E1 Rabbit pAb at 1:1000. Secondary antibody: HRP Goat Anti-Rabbit IgG (H+L) at 1:5000. Lysates/proteins: 30ug per lane. Blocking buffer: 5% non-fat dry milk in TBST. Detection: ECL Enhanced Kit. Exposure time: 120s.

实验步骤

访问官网浏览详情: www.ablybio.cn