

# SLC22A12 Rabbit pAb

货号: **AYP11517**

## 产品信息

反应	Human,Mouse,Rat
宿主	Rabbit
克隆性	Polyclonal
预测反应	<b>WB:</b> HUVEC , Mus musculus , Homo sapiens , Rattus norvegicus
应用	<a href="#">WB</a>
推荐浓度	<b>WB:</b> 1:100 - 1:500
理论分子量	35kDa/47kDa/56kDa/59kDa
实测分子量	60KDa
形式	Liquid
保存条件	Store at -20°C. Avoid freeze / thaw cycles. Buffer: PBS with 0.05% proclin300,50% glycerol,pH7.3.
偶联物	Unconjugated
阳性对照	Mouse kidney
细胞定位	Cell membrane,Multi-pass membrane protein
纯化	Affinity purification

## 抗原信息

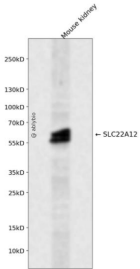
抗原信息	Recombinant fusion protein containing a sequence corresponding to amino acids 30-150 of human SLC22A12 (NP_653186.2).
序列	WLCTQSMLENFSAAVPSHRCWAPLLDNSTAQASILGSLSPALLAISIPPQPNQRPHQCRRFRQPQWQLLDPNATATSWSEADTEPCVDGWVYDRSIFTSTIVAKWNLVCDSHALKPMAQS

## 靶点信息

研究背景	The protein encoded by this gene is a member of the organic anion transporter (OAT) family, and it acts as a urate transporter to regulate urate levels in blood. This protein is an integral membrane protein primarily found in epithelial cells of the proximal tubule of the kidney. An elevated level of serum urate, hyperuricemia, is associated with increased incidences of gout, and mutations in this gene cause renal hypouricemia type 1. Alternative splicing results in multiple transcript variants.
基因ID	116085

基因名	SLC22A12
Swiss	Q96S37
别名	SLC22A12;OAT4L;RST;URAT1

## 产品验证



Western blot analysis of SLC22A12 expressed in Mouse kidney using SLC22A12 Rabbit pAb at 1:1000. Secondary antibody: HRP Goat Anti-Rabbit IgG (H+L) at 1:5000. Lysates/proteins: 30ug per lane. Blocking buffer: 5% non-fat dry milk in TBST. Detection: ECL Enhanced Kit. Exposure time: 120s.

## 实验步骤

访问官网浏览详情: [www.ablybio.cn](http://www.ablybio.cn)