

Lipoprotein lipase (LPL) Rabbit pAb

货号: **AYP11491**

产品信息

反应	Human,Mouse,Rat
宿主	Rabbit
克隆性	Polyclonal
预测反应	IHC: Mus musculus WB: Mus musculus , Homo sapiens
应用	WB
推荐浓度	WB: 1:500 - 1:1000
理论分子量	53kDa
实测分子量	53KDa
形式	Liquid
保存条件	Store at -20°C. Avoid freeze / thaw cycles. Buffer: PBS with 0.05% proclin300,50% glycerol,pH7.3.
偶联物	Unconjugated
阳性对照	HepG2,Mouse brain,Rat brain
细胞定位	Cell membrane,GPI-anchor,Lipid-anchor,Secreted
纯化	Affinity purification

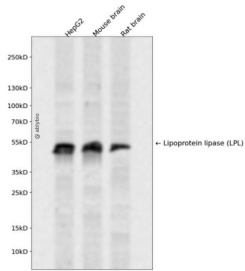
抗原信息

抗原信息	Recombinant fusion protein containing a sequence corresponding to amino acids 124-475 of human Lipoprotein lipase (Lipoprotein lipase (LPL)) (NP_000228.1).
序列	SAGYTKLVGQDVARFINWMEEEFNYPDNDVHLLGYSLGAHAAGIAGSLTNKKVNRITGLDPAGPNFEYAEAPSRLSPDDA DFVDVLHTFTRGSPGRSIGIQKPVGHVDIYPNGGTFQPGCNIGEAIRVIAERGLGDVDQLVKCSHERSIHLFIDSLNEENPS KAYRCSSKEAFEKGLCLSCRKNRCNNLGYEINKVRAKRSSKMYLKTRSQMPYKVFHYQVKIHFSGTESEHTNQAFEISLY GTVAESENIPFTLPEVSTNKTYSFLLIYTEVDIGELMLKWKSDSYFSWSDWWSSPGFAIQKIRVKAGETQKKVIFCSREK VSHLQKKGKAPAVFVKCHDKSLNKKSG

靶点信息

研究背景	LPL encodes lipoprotein lipase, which is expressed in heart, muscle, and adipose tissue. LPL functions as a homodimer, and has the dual functions of triglyceride hydrolase and ligand/bridging factor for receptor-mediated lipoprotein uptake. Severe mutations that cause LPL deficiency result in type I hyperlipoproteinemia, while less extreme mutations in LPL are linked to many disorders of lipoprotein metabolism.
基因ID	4023
基因名	LPL
Swiss	P06858
别名	LPL;HDLQC11;LIPD

产品验证



Western blot analysis of Lipoprotein lipase (LPL) expressed in HepG2, Mouse brain, Rat brain using Lipoprotein lipase (LPL) Rabbit pAb at 1:1000. Secondary antibody: HRP Goat Anti-Rabbit IgG (H+L) at 1:5000. Lysates/proteins: 30ug per lane. Blocking buffer: 5% non-fat dry milk in TBST. Detection: ECL Enhanced Kit. Exposure time: 120s.

实验步骤

访问官网浏览详情: www.ablybio.cn