

RYR2 Rabbit pAb

货号: **AYP11485**

产品信息

反应	Human,Mouse,Rat
宿主	Rabbit
克隆性	Polyclonal
预测反应	WB: Mus musculus , Rattus norvegicus
应用	WB IF/ICC
推荐浓度	WB: 1:500 - 1:1000 IF/ICC: 1:50 - 1:200
理论分子量	564kDa/565kDa
实测分子量	564KDa
形式	Liquid
保存条件	Store at -20°C. Avoid freeze / thaw cycles. Buffer: PBS with 0.05% proclin300,50% glycerol,pH7.3.
偶联物	Unconjugated
阳性对照	Mouse heart
细胞定位	Membrane,Multi-pass membrane protein,Sarcoplasmic reticulum membrane
纯化	Affinity purification

抗原信息

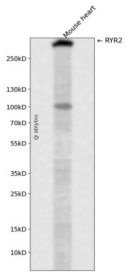
抗原信息	A synthetic peptide corresponding to a sequence within amino acids 4200-4300 of human RYR2 (NP_001026.2).
序列	MQLAAQISEDLNERSANKEESEKERPEEQGPRMAFFSILTVRSALFALRYNILTLMRMLSLKSLKKQMKKVKKMTVKDMV TAFSSYWSIFMTLLHFVAS

靶点信息

研究背景	This gene encodes a ryanodine receptor found in cardiac muscle sarcoplasmic reticulum. The encoded protein is one of the components of a calcium channel, composed of a tetramer of the ryanodine receptor proteins and a tetramer of FK506 binding protein 1B proteins, that supplies calcium to cardiac muscle. Mutations in this gene are associated with stress-induced polymorphic ventricular tachycardia and arrhythmic right ventricular dysplasia.
------	---

基因ID	6262
基因名	RYR2
Swiss	Q92736
别名	RYR2;ARVC2;ARVD2;RYR-2;RyR;VTSIP;RYR2

产品验证



Western blot analysis of RYR2 expressed in Mouse heart using RYR2 Rabbit pAb at 1:1000. Secondary anti body: HRP Goat Anti-Rabbit IgG (H+L) at 1:5000. Lysates/proteins: 30ug per lane. Blocking buffer: 5% no n-fat dry milk in TBST. Detection: ECL Enhanced Kit. Exposure time: 120s.

实验步骤

访问官网浏览详情: www.ablybio.cn