

— ABLYBIO, Help Your Research



# ACTN1 Rabbit pAb

货号: **AYP11473**

## 产品信息

反应	Human,Mouse,Monkey
宿主	Rabbit
克隆性	Polyclonal
预测反应	<b>WB:</b> Mus musculus , Danio rerio , Gallus gallus <b>ICC:</b> Homo sapiens <b>IF:</b> Homo sapiens , Gallus gallus
应用	WB IHC
推荐浓度	<b>WB:</b> 1:500 - 1:1000 <b>IHC:</b> 1:50 - 1:200
理论分子量	102kDa/103kDa/105kDa/107kDa
实测分子量	103KDa
形式	Liquid
保存条件	Store at -20°C. Avoid freeze / thaw cycles. Buffer: PBS with 0.02% sodium azide,50% glycerol,pH7.3.
偶联物	Unconjugated
阳性对照	NIH/3T3
细胞定位	Cell junction,Cell membrane,Cell projection,Cytoplasm,Z line,cytoskeleton,myofibril,ruffle,sarcomere
纯化	Affinity purification

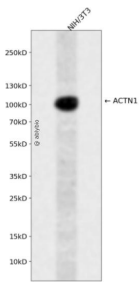
## 抗原信息

抗原信息	Recombinant fusion protein containing a sequence corresponding to amino acids 1-330 of human ACTN1 (NP_001123477.1).
------	--

## 靶点信息

研究背景	Alpha actinins belong to the spectrin gene superfamily which represents a diverse group of cytoskeletal proteins, including the alpha and beta spectrins and dystrophins. Alpha actinin is an actin-binding protein with multiple roles in different cell types. In nonmuscle cells, the cytoskeletal isoform is found along microfilament bundles and adherens-type junctions, where it is involved in binding actin to the membrane. In contrast, skeletal, cardiac, and smooth muscle isoforms are localized to the Z-disc and analogous dense bodies, where they help anchor the myofibrillar actin filaments. This gene encodes a nonmuscle, cytoskeletal, alpha actinin isoform and maps to the same site as the structurally similar erythroid beta spectrin gene. Three transcript variants encoding different isoforms have been found for this gene.
基因ID	87
基因名	ACTN1
Swiss	P12814 ( <a href="https://www.uniprot.org/uniprotkb/P12814/entry">https://www.uniprot.org/uniprotkb/P12814/entry</a> )
别名	ACTN1,BDPLT15,ACTN1 Rabbit pAb,Alpha-actinin cytoskeletal isoform,F-actin cross-linking protein,Non-muscle alpha-actinin-1

## 产品验证



Western blot analysis of ACTN1 expressed in NIH/3T3 using ACTN1 Rabbit pAb at 1:1000. Secondary antibody: HRP Goat Anti-Rabbit IgG (H+L) at 1:5000. Lysates/proteins: 30ug per lane. Blocking buffer: 5% non-fat dry milk in TBST. Detection: ECL Enhanced Kit. Exposure time: 120s.

## 实验步骤

访问官网浏览详情: [www.ablybio.cn](http://www.ablybio.cn) (<https://www.ablybio.cn/www.ablybio.cn>)