

# MYH6/ $\alpha$ -MHC Rabbit pAb

货号: **AYP11469**

## 产品信息

反应	Mouse,Rat
宿主	Rabbit
克隆性	Polyclonal
预测反应	<b>WB:</b> Mus musculus , Homo sapiens , Bos taurus <b>IF:</b> Homo sapiens , Cerdo blanco en polvo de oro , Mus musculus
应用	<a href="#">WB</a> <a href="#">IF/ICC</a>
推荐浓度	<b>WB:</b> 1:1000 - 1:2000 <b>IF/ICC:</b> 1:50 - 1:200
理论分子量	223kDa
实测分子量	250kDa
形式	Liquid
保存条件	Store at -20°C. Avoid freeze / thaw cycles. Buffer: PBS with 0.01% thiomersal,50% glycerol,pH7.3.
偶联物	Unconjugated
阳性对照	Mouse skeletal muscle
细胞定位	Cytoplasm,myofibril
纯化	Affinity purification

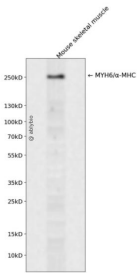
## 抗原信息

抗原信息	Recombinant fusion protein containing a sequence corresponding to amino acids 1-250 of human MYH6/ $\alpha$ -MHC (NP_002462.2).
序列	MTDAQMADFGAAAQYLRKSEKERLEAQTRPFDIRTECFVDDKEEFVKAKILSREGGK VIAETENGKTVTVKEDQVLQQNPPKFDKIEDMAMLTFLHEPAVLFLNFKERYAAWMIYYSGLFCVTVNPYKWLVPVYNAEVVAAYRGKKRSEAPPHIFSISDNAYQYMLTDRENQSILITGESGAGKTVNTRVIQYFASIAAIGDRGKKDNANANKGTLEDQIIQANPALEAFGNAKTVRNDNSSRFGKFIR

## 靶点信息

研究背景	Cardiac muscle myosin is a hexamer consisting of two heavy chain subunits, two light chain subunits, and two regulatory subunits. This gene encodes the alpha heavy chain subunit of cardiac myosin. The gene is located approximately 4kb downstream of the gene encoding the beta heavy chain subunit of cardiac myosin. Mutations in this gene cause familial hypertrophic cardiomyopathy and atrial septal defect 3.
基因ID	4624
基因名	MYH6
Swiss	P13533
别名	MYH6;ASD3;CMD1EE;CMH14;MYHC;MYHCA;SSS3;alpha-MHC;myosin-6

## 产品验证



Western blot analysis of MYH6/α-MHC expressed in Mouse skeletal muscle using MYH6/α-MHC Rabbit pAb at 1:1000. Secondary antibody: HRP Goat Anti-Rabbit IgG (H+L) at 1:5000. Lysates/proteins: 30ug per lane. Blocking buffer: 5% non-fat dry milk in TBST. Detection: ECL Enhanced Kit. Exposure time: 120s.

## 实验步骤

访问官网浏览详情: [www.ablybio.cn](http://www.ablybio.cn)