

TET1 Rabbit pAb

货号: **AYP11465**

产品信息

反应	Human,Mouse,Rat
宿主	Rabbit
克隆性	Polyclonal
预测反应	WB: Mus musculus , Homo sapiens , human IHC: Mus musculus IF: Homo sapiens
应用	WB IHC IF/ICC
推荐浓度	WB: 1:500 - 1:1000 IHC: 1:50 - 1:200 IF/ICC: 1:50 - 1:200
理论分子量	235kDa
实测分子量	250KDa
形式	Liquid
保存条件	Store at -20°C. Avoid freeze / thaw cycles. Buffer: PBS with 0.05% proclin300,50% glycerol,pH7.3.
偶联物	Unconjugated
阳性对照	Neuro-2a,Rat heart
细胞定位	Nucleus
纯化	Affinity purification

抗原信息

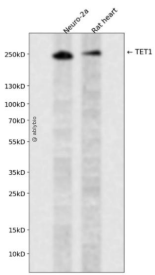
抗原信息	A synthetic peptide corresponding to a sequence within amino acids 1800-1900 of human TET1 (NP_085128.2).
序列	TLGSNTETVQPEVKSETEPHFILKSSDNTKTYSLMPSAPHPVKEASPGFSWSPKTASATPAPLKN DATASCGFSERSSTPHCTMPSGRLSGANAAAADGPG

靶点信息

研究背景	DNA methylation is an epigenetic mechanism that is important for controlling gene expression. The protein encoded by this gene is a demethylase that belongs to the TET (ten-eleven translocation) family. Members of the TET protein family play a role in the DNA methylation process and gene activation.
------	--

基因ID	80312
基因名	TET1
Swiss	Q8NFI7
别名	TET1;CXXC6;LCX;bA119F7.1;MLL-TET1;TET1-MLL

产品验证



Western blot analysis of TET1 expressed in Neuro-2a,Rat heart using TET1 Rabbit pAb at 1:1000. Secondary antibody: HRP Goat Anti-Rabbit IgG (H+L) at 1:5000. Lysates/proteins: 30ug per lane. Blocking buffer: 5% non-fat dry milk in TBST. Detection: ECL Enhanced Kit. Exposure time: 120s.

实验步骤

访问官网浏览详情: www.ablybio.cn