

# CYP1A1 Rabbit pAb

货号: **AYP11458**

## 产品信息

反应	Human,Mouse,Rat
宿主	Rabbit
克隆性	Polyclonal
预测反应	<b>WB:</b> Rattus norvegicus , Mus musculus , Sus scrofa <b>IHC:</b> Rattus norvegicus
应用	<a href="#">WB</a> <a href="#">IF/ICC</a>
推荐浓度	<b>WB:</b> 1:500 - 1:1000 <b>IF/ICC:</b> 1:50 - 1:200
理论分子量	18kDa/20kDa/58kDa
实测分子量	55KDa
形式	Liquid
保存条件	Store at -20°C. Avoid freeze / thaw cycles. Buffer: PBS with 0.05% proclin300,50% glycerol,pH7.3.
偶联物	Unconjugated
阳性对照	Mouse liver,Mouse stomach
细胞定位	Endoplasmic reticulum membrane,Microsome membrane,Peripheral membrane protein
纯化	Affinity purification

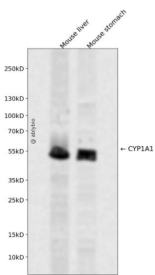
## 抗原信息

抗原信息	Recombinant fusion protein containing a sequence corresponding to amino acids 185-316 of human CYP1A1 (NP_000490.1).
序列	NPYRYVVVSVTNVICAICFGRRYDHNHQELLSLVNLNNNFGEVVGSGNPADFIPILRYLPNPSLNAFKDLNEKFYSFMQKMV KEHYKTFEKGHIRDITDSLIEHCQEKQLDENANVQLSDEKIINIVLDFG

## 靶点信息

研究背景	This gene, CYP1A1, encodes a member of the cytochrome P450 superfamily of enzymes. The cytochrome P450 proteins are monooxygenases which catalyze many reactions involved in drug metabolism and synthesis of cholesterol, steroids and other lipids. This protein localizes to the endoplasmic reticulum and its expression is induced by some polycyclic aromatic hydrocarbons (PAHs), some of which are found in cigarette smoke. The enzyme's endogenous substrate is unknown; however, it is able to metabolize some PAHs to carcinogenic intermediates. The gene has been associated with lung cancer risk. A related family member, CYP1A2, is located approximately 25 kb away from CYP1A1 on chromosome 15. Alternative splicing results in multiple transcript variants encoding distinct isoforms.
基因ID	1543
基因名	CYP1A1
Swiss	P04798
别名	CYP1A1;AHH;AHRR;CP11;CYP1;CYPIA1;P1-450;P450-C;P450DX

## 产品验证



Western blot analysis of CYP1A1 expressed in Mouse liver, Mouse stomach using CYP1A1 Rabbit pAb at 1:1000. Secondary antibody: HRP Goat Anti-Rabbit IgG (H+L) at 1:5000. Lysates/proteins: 30ug per lane. Blocking buffer: 5% non-fat dry milk in TBST. Detection: ECL Enhanced Kit. Exposure time: 120s.

## 实验步骤

访问官网浏览详情: [www.ablybio.cn](http://www.ablybio.cn)