

— ABLYBIO, Help Your Research



# Phospho-Camk2a-T286 Rabbit pAb

货号: **AYP11456**

## 产品信息

反应	Human,Mouse,Rat
宿主	Rabbit
克隆性	Polyclonal
预测反应	<b>WB:</b> Homo sapiens , Mus musculus <b>Co-IP:</b> Homo sapiens
应用	WB
推荐浓度	<b>WB:</b> 1:2000 - 1:4000
理论分子量	22kDa/54kDa
实测分子量	50KDa
形式	Liquid
保存条件	Store at -20°C. Avoid freeze / thaw cycles. Buffer: PBS with 0.05% proclin300,50% glycerol,pH7.3.
偶联物	Unconjugated
阳性对照	Mouse brain
细胞定位	Cell junction,presynaptic cell membrane,synapse
纯化	Affinity purification

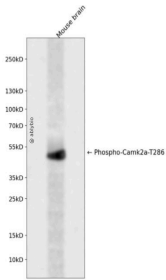
## 抗原信息

抗原信息	A synthetic phosphorylated peptide around T286 of human Camk2a (NP_741960.1).
------	---

## 靶点信息

研究背景	The product of this gene belongs to the serine/threonine protein kinases family, and to the Ca(2+)/calmodulin-dependent protein kinases subfamily. Calcium signaling is crucial for several aspects of plasticity at glutamatergic synapses. This calcium calmodulin-dependent protein kinase is composed of four different chains: alpha, beta, gamma, and delta. The alpha chain encoded by this gene is required for hippocampal long-term potentiation (LTP) and spatial learning. In addition to its calcium-calmodulin (CaM)-dependent activity, this protein can undergo autophosphorylation, resulting in CaM-independent activity. Two transcript variants encoding distinct isoforms have been identified for this gene.
基因ID	815
基因名	CAMK2A
Swiss	Q9UQM7 ( <a href="https://www.uniprot.org/uniprotkb/Q9UQM7/entry">https://www.uniprot.org/uniprotkb/Q9UQM7/entry</a> )
别名	CAMK2A,CAMKA,Phospho-Camk2a-T286 Rabbit pAb,KIAA0968

## 产品验证



Western blot analysis of Phospho-Camk2a-T286 expressed in Mouse brain using Phospho-Camk2a-T286 R abbit pAb at 1:1000. Secondary antibody: HRP Goat Anti-Rabbit IgG (H+L) at 1:5000. Lysates/proteins: 30 ug per lane. Blocking buffer: 5% non-fat dry milk in TBST. Detection: ECL Enhanced Kit. Exposure time: 12 0s.

## 实验步骤

访问官网浏览详情: [www.ablybio.cn](http://www.ablybio.cn) (<https://www.ablybio.cn/www.ablybio.cn>)