

MT-ND1 Rabbit pAb

货号: **AYP11451**

产品信息

反应	Human,Mouse
宿主	Rabbit
克隆性	Polyclonal
预测反应	WB: Homo sapiens , Mus musculus
应用	WB
推荐浓度	WB: 1:500 - 1:1000
理论分子量	36kDa
实测分子量	36kDa
形式	Liquid
保存条件	Store at -20°C. Avoid freeze / thaw cycles. Buffer: PBS with 0.02% sodium azide,50% glycerol,pH7.3.
偶联物	Unconjugated
阳性对照	293T,HeLa
细胞定位	Mitochondrion inner membrane,Multi-pass membrane protein
纯化	Affinity purification

抗原信息

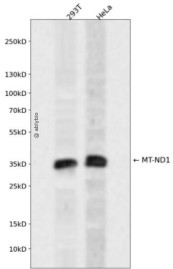
抗原信息	A synthetic peptide corresponding to a sequence within amino acids 1-100 of mouse MT-ND1 (NP_904328.1).
序列	MFFINILTLVPIIAMAFLLVERKILGYMQLRKGPNIVGPYGILQPFADAMKLFMKEPMRPLTTSMSLFIIAPTLSLTLALSLWVPLPMPHPLINLNL

靶点信息

研究背景	Core subunit of the mitochondrial membrane respiratory chain NADH dehydrogenase (Complex I which catalyzes electron transfer from NADH through the respiratory chain, using ubiquinone as an electron acceptor. Essential for the catalytic activity and assembly of complex I.
基因ID	4535

基因名	MT-ND1
Swiss	P03888
别名	MTND1;ND1;NADH dehydrogenase subunit 1;NADH1;MT-ND1

产品验证



Western blot analysis of MT-ND1 expressed in 293T, HeLa using MT-ND1 Rabbit pAb at 1:1000. Secondary antibody: HRP Goat Anti-Rabbit IgG (H+L) at 1:5000. Lysates/proteins: 30ug per lane. Blocking buffer: 5% non-fat dry milk in TBST. Detection: ECL Enhanced Kit. Exposure time: 120s.

实验步骤

访问官网浏览详情: www.ablybio.cn