

BACE1 Rabbit pAb

货号: AYP11450

产品信息

反应	Human,Mouse,Rat
宿主	Rabbit
克隆性	Polyclonal
预测反应	WB: Homo sapiens , Mus musculus
应用	WB IHC IF/ICC
推荐浓度	WB: 1:100 - 1:500 IHC: 1:50 - 1:200 IF/ICC: 1:50 - 1:200
理论分子量	42kDa/45kDa/48kDa/51kDa/52kDa/55kDa
实测分子量	70KDa
形式	Liquid
保存条件	Store at -20°C. Avoid freeze / thaw cycles. Buffer: PBS with 0.05% proclin300,50% glycerol,pH7.3.
偶联物	Unconjugated
阳性对照	SH-SY5Y
细胞定位	Cell surface,Cytoplasmic vesicle membrane,Endoplasmic reticulum,Endosome,Golgi apparatus,Membrane ,Single-pass type I membrane protein,trans-Golgi network
纯化	Affinity purification

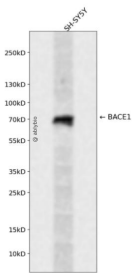
抗原信息

抗原信息	Recombinant fusion protein containing a sequence corresponding to amino acids 22-322 of human BACE1 (NP_036236.1).
序列	TQHGIRLPLRSGLGAPLGLRLPRETDEEPEEPGRRGSFVEMVDNLRGKSGQGYVEMTVGSPQTLNILVDTGSSNFAV GAAPHPFLHRYRQLSSTYRDLRKGVYVPYTGKWEGLGTDLVSIPHGPNVTVRANIAAITESDKFFINGSNWEGILGL AYAEIARPDDSLEPFDSLQKTHVPLFSLQLCGAGPLNQSEVLASVGGSMIIGGIDHSLYTGSLWYTPIRREWYVEIIV RVEINGQDLKMDCKEYNYDKSIVDSGTTNLRPLPKVFEAAVKSIIKAAASSTEKFPDGF

靶点信息

研究背景	This gene encodes a member of the peptidase A1 family of aspartic proteases. Alternative splicing results in multiple transcript variants, at least one of which encodes a preproprotein that is proteolytically processed to generate the mature protease. This transmembrane protease catalyzes the first step in the formation of amyloid beta peptide from amyloid precursor protein. Amyloid beta peptides are the main constituent of amyloid beta plaques, which accumulate in the brains of human Alzheimer's disease patients.
基因ID	23621
基因名	BACE1
Swiss	P56817
别名	BACE1;ASP2;BACE;HSPC104

产品验证



Western blot analysis of BACE1 expressed in SH-SY5Y using BACE1 Rabbit pAb at 1:1000. Secondary antibody: HRP Goat Anti-Rabbit IgG (H+L) at 1:5000. Lysates/proteins: 30ug per lane. Blocking buffer: 5% non-fat dry milk in TBST. Detection: ECL Enhanced Kit. Exposure time: 120s.

实验步骤

访问官网浏览详情: www.ablybio.cn