

CGRP Rabbit pAb

货号: **AYP11449**

产品信息

反应	Human,Mouse,Rat
宿主	Rabbit
克隆性	Polyclonal
预测反应	IF: Mus musculus Immunostaining: Mus musculus WB: Rattus norvegicus , Mus musculus , Homo sapiens IHC: Rattus norvegicus , Homo sapiens
应用	WB IF/ICC
推荐浓度	WB: 1:500 - 1:1000 IF/ICC: 1:50 - 1:200
理论分子量	13kDa/15kDa
实测分子量	14KDa
形式	Liquid
保存条件	Store at -20°C. Avoid freeze / thaw cycles. Buffer: PBS with 0.05% proclin300,50% glycerol,pH7.3.
偶联物	Unconjugated
阳性对照	Mouse brain
细胞定位	Secreted
纯化	Affinity purification

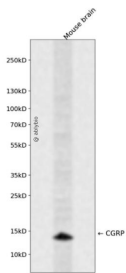
抗原信息

抗原信息	A synthetic peptide corresponding to a sequence within amino acids 49-128 of human CGRP (NP_001029 125.1).
序列	LLLAALVQDYVQMKASELEQEQEREGRSRIIAQKRACDTATCVTHRLAGLLSRSGGVVKNFVPTNVGSKAFGRRRRDLQA

靶点信息

研究背景	This gene encodes the peptide hormones calcitonin, calcitonin gene-related peptide and katacalcin by tissue-specific alternative RNA splicing of the gene transcripts and cleavage of inactive precursor proteins. Calcitonin is involved in calcium regulation and acts to regulate phosphorus metabolism. Calcitonin gene-related peptide functions as a vasodilator and as an antimicrobial peptide while katacalcin is a calcium-lowering peptide. Multiple transcript variants encoding different isoforms have been found for this gene.
基因ID	796
基因名	CALCA
Swiss	P01258,P06881
别名	CALCA;CALC1;CGRP;CGRP-I;CGRP1;CT;KC;PCT

产品验证



Western blot analysis of CGRP expressed in Mouse brain using CGRP Rabbit pAb at 1:1000. Secondary antibody: HRP Goat Anti-Rabbit IgG (H+L) at 1:5000. Lysates/proteins: 30ug per lane. Blocking buffer: 5% non-fat dry milk in TBST. Detection: ECL Enhanced Kit. Exposure time: 120s.

实验步骤

访问官网浏览详情: www.ablybio.cn