

— ABLYBIO, Help Your Research



# MYH1 Rabbit pAb

货号: **AYP11444**

## 产品信息

反应	Human,Mouse,Rat
宿主	Rabbit
克隆性	Polyclonal
预测反应	<b>WB:</b> Sus scrofa , Mus musculus <b>IF:</b> Homo sapiens <b>IHC:</b> Mus musculus
应用	WB IHC IF/ICC
推荐浓度	<b>WB:</b> 1:100 - 1:500 <b>IHC:</b> 1:50 - 1:200 <b>IF/ICC:</b> 1:50 - 1:200
理论分子量	223kDa
实测分子量	251KDa
形式	Liquid
保存条件	Store at -20°C. Avoid freeze / thaw cycles. Buffer: PBS with 0.05% proclin300,50% glycerol,pH7.3.
偶联物	Unconjugated
阳性对照	Mouse skeletal muscle,Rat skeletal muscle
细胞定位	Cytoplasm,myofibril
纯化	Affinity purification

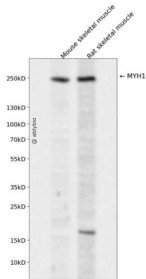
## 抗原信息

抗原信息	Recombinant fusion protein containing a sequence corresponding to amino acids 1-100 of human MYH1 (NP_005954.3).
------	--

## 靶点信息

研究背景	Myosin is a major contractile protein which converts chemical energy into mechanical energy through the hydrolysis of ATP. Myosin is a hexameric protein composed of a pair of myosin heavy chains (MYH) and two pairs of nonidentical light chains. Myosin heavy chains are encoded by a multigene family. In mammals at least 10 different myosin heavy chain (MYH) isoforms have been described from striated, smooth, and nonmuscle cells. These isoforms show expression that is spatially and temporally regulated during development.
基因ID	4619
基因名	MYH1
Swiss	P12882 ( <a href="https://www.uniprot.org/uniprotkb/P12882/entry">https://www.uniprot.org/uniprotkb/P12882/entry</a> )
别名	MYH1,HEL71,MYHSA1,MYHa,MyHC-2X/D,MyHC-2x,myosin-1,MYH1 Rabbit pAb,Myosin heavy chain 1,Myosin heavy chain 2x,Myosin heavy chain IIX/d,Myosin heavy chain,skeletal muscle,adult 1

## 产品验证



Western blot analysis of MYH1 expressed in Mouse skeletal muscle,Rat skeletal muscle using MYH1 Rabbit pAb at 1:1000. Secondary antibody: HRP Goat Anti-Rabbit IgG (H+L) at 1:5000. Lysates/proteins: 30ug per lane. Blocking buffer: 5% non-fat dry milk in TBST. Detection: ECL Enhanced Kit. Exposure time: 120s.

## 实验步骤

访问官网浏览详情: [www.ablybio.cn](http://www.ablybio.cn) (<https://www.ablybio.cn/www.ablybio.cn>)