

KLF9 Rabbit pAb

货号: **AYP11443**

产品信息

反应	Human,Mouse,Rat
宿主	Rabbit
克隆性	Polyclonal
预测反应	WB: Mus musculus , Homo sapiens ChIP: Mus musculus
应用	WB
推荐浓度	WB: 1:500 - 1:1000
理论分子量	27kDa
实测分子量	30KDa
形式	Liquid
保存条件	Store at -20°C. Avoid freeze / thaw cycles. Buffer: PBS with 0.01% thiomersal,50% glycerol,pH7.3.
偶联物	Unconjugated
阳性对照	HepG2,A-549,K-562,Mouse kidney,Rat kidney
细胞定位	Nucleus
纯化	Affinity purification

抗原信息

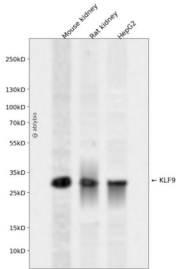
抗原信息	Recombinant fusion protein containing a sequence corresponding to amino acids 1-150 of human KLF9 (N P_001197.1).
序列	MSAAAYMDFVAAQLVSI SNRAAVPEHGVAPDAERLRLPEREVTKEHGDPGDTWKDYCTLVTIAKSLLDLNKYRPIQTSPV CSDSLESPDEDMGSDSDVTTESGSSPSHSPEERQDPGSAPSPLSLLHPGVAAKKGHASEKRHKCPYSGC

靶点信息

研究背景	The protein encoded by this gene is a transcription factor that binds to GC box elements located in the promoter. Binding of the encoded protein to a single GC box inhibits mRNA expression while binding to tandemly repeated GC box elements activates transcription.
基因ID	687

基因名	KLF9
Swiss	Q13886
别名	KLF9;BTEB;BTEB1

产品验证



Western blot analysis of KLF9 expressed in Mouse kidney,Rat kidney,HepG2 using KLF9 Rabbit pAb at 1:1000. Secondary antibody: HRP Goat Anti-Rabbit IgG (H+L) at 1:5000. Lysates/proteins: 30ug per lane. Blocking buffer: 5% non-fat dry milk in TBST. Detection: ECL Enhanced Kit. Exposure time: 120s.

实验步骤

访问官网浏览详情: www.ablybio.cn