

GLUT2/SLC2A2 Rabbit pAb

货号: AYP11436

产品信息

反应	Human,Mouse,Rat
宿主	Rabbit
克隆性	Polyclonal
预测反应	WB、IF: Homo sapiens WB: Gallus gallus , Homo sapiens , Mus musculus , Mesocricetus auratus
应用	WB
推荐浓度	WB: 1:100 - 1:500
理论分子量	44kDa/57kDa
实测分子量	38-45KDa
形式	Liquid
保存条件	Store at -20°C. Avoid freeze / thaw cycles. Buffer: PBS with 0.02% sodium azide,50% glycerol,pH7.3.
偶联物	Unconjugated
阳性对照	Mouse small intestine,Rat small intestine
细胞定位	Membrane,Multi-pass membrane protein
纯化	Affinity purification

抗原信息

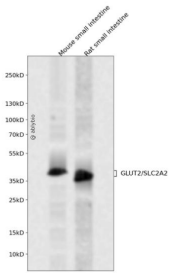
抗原信息	A synthetic peptide corresponding to a sequence within amino acids 1-100 of human GLUT2/GLUT2/SLC2A2 (NP_000331.1).
序列	MTEDKVTGTLVFTVITAVLGSFQFGYDIGVINAPQQVIISHYRHVLGVPLDDRKAINNYVINSTDELPTISYSMNPKPTPWAE EETVAAAQLITMLWSLS

靶点信息

研究背景	This gene encodes an integral plasma membrane glycoprotein of the liver, islet beta cells, intestine, and kidney epithelium. The encoded protein mediates facilitated bidirectional glucose transport. Because of its low affinity for glucose, it has been suggested as a glucose sensor. Mutations in this gene are associated with susceptibility to diseases, including Fanconi-Bickel syndrome and noninsulin-dependent diabetes mellitus (NIDDM). Alternative splicing results in multiple transcript variants of this gene.
------	--

基因ID	6514
基因名	SLC2A2
Swiss	P11168
别名	SLC2A2;GLUT2

产品验证



Western blot analysis of GLUT2/SLC2A2 expressed in Mouse small intestine, Rat small intestine using GLUT2/SLC2A2 Rabbit pAb at 1:1000. Secondary antibody: HRP Goat Anti-Rabbit IgG (H+L) at 1:5000. Lysates/proteins: 30ug per lane. Blocking buffer: 5% non-fat dry milk in TBST. Detection: ECL Enhanced Kit. Exposure time: 120s.

实验步骤

访问官网浏览详情: www.ablybio.cn