

MT-ND4 Rabbit pAb

货号: **AYP11435**

产品信息

| | |
|-------|--|
| 反应 | Human,Mouse,Rat |
| 宿主 | Rabbit |
| 克隆性 | Polyclonal |
| 预测反应 | WB: Homo sapiens |
| 应用 | WB |
| 推荐浓度 | WB: 1:500 - 1:1000 |
| 理论分子量 | 51kDa |
| 实测分子量 | 50KDa |
| 形式 | Liquid |
| 保存条件 | Store at -20°C. Avoid freeze / thaw cycles. Buffer: PBS with 0.02% sodium azide,50% glycerol,pH7.3. |
| 偶联物 | Unconjugated |
| 阳性对照 | 293T,RD,Mouse heart,Rat heart |
| 细胞定位 | Mitochondrion membrane,Multi-pass membrane protein |
| 纯化 | Affinity purification |

抗原信息

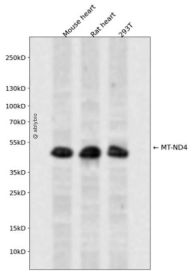
| | |
|------|---|
| 抗原信息 | A synthetic peptide corresponding to a sequence within amino acids 350-450 of mouse MT-ND4 (NP_904337.1). |
| 序列 | MVFPLMATWWLMASLANLALPPSINLMGELFITMSLFSWSNFTIILMGINIITGMYSMYMIITTQRGKLTNHMINLQPSHTRE LTLMALHMIPLILLTTS |

靶点信息

| | |
|------|---|
| 研究背景 | Predicted to enable NADH dehydrogenase (ubiquinone) activity and ubiquinone binding activity. Predicted to contribute to NADH dehydrogenase activity. Predicted to be involved in several processes, including electron transport coupled proton transport; mitochondrial electron transport, NADH to ubiquinone; and mitochondrial respiratory chain complex I assembly. Located in mitochondrion. Human ortholog(s) of this gene implicated in Leber hereditary optic neuropathy; Parkinson's disease; macular degeneration; and sc hizophrenia. Orthologous to human MT-ND4 (mitochondrially encoded NADH:ubiquinone oxidoreductase core subunit 4). |
|------|---|

| | |
|-------|------------------|
| 基因ID | 17719 |
| 基因名 | |
| Swiss | |
| 别名 | MT-ND4;MTND4;ND4 |

产品验证



Western blot analysis of MT-ND4 expressed in Mouse heart,Rat heart,293T using MT-ND4 Rabbit pAb at 1:1000. Secondary antibody: HRP Goat Anti-Rabbit IgG (H+L) at 1:5000. Lysates/proteins: 30ug per lane. Blocking buffer: 5% non-fat dry milk in TBST. Detection: ECL Enhanced Kit. Exposure time: 120s.

实验步骤

访问官网浏览详情: www.ablybio.cn