

— ABLYBIO, Help Your Research



# LAMP1 Rabbit pAb

货号: **AYP11400**

## 产品信息

|       |  |
|-------|--|
| 反应    | Human,Mouse,Rat  |
| 宿主    | Rabbit   |
| 克隆性   | Polyclonal   |
| 预测反应  | <b>WB:</b> Mus musculus , Homo sapiens<br><b>IF:</b> Homo sapiens , Rattus norvegicus , Mus musculus<br><b>IHC:</b> Mus musculus |
| 应用    | WB IF/ICC IHC  |
| 推荐浓度  | <b>WB:</b> 1:500 - 1:1000<br><b>IF/ICC:</b> 1:50 - 1:200<br><b>IHC:</b> 1:50 - 1:200   |
| 理论分子量 | 38kDa/44kDa  |
| 实测分子量 | 45KDa/110KDa   |
| 形式    | Liquid   |
| 保存条件  | Store at -20°C. Avoid freeze / thaw cycles.<br>Buffer: PBS with 0.05% proclin300,50% glycerol,pH7.3.                             |
| 偶联物   | Unconjugated   |
| 阳性对照  | U-251MG,HeLa,Mouse kidney,Rat brain  |
| 细胞定位  | Cell membrane,Endosome membrane,Late endosome,Lysosome membrane,Single-pass type I membrane protein                              |
| 纯化    | Affinity purification  |

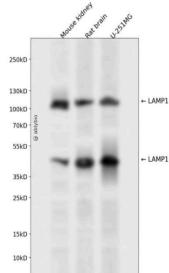
## 抗原信息

|      |  |
|------|--|
| 抗原信息 | A synthetic peptide corresponding to a sequence within amino acids 150-250 of human LAMP1 (NP_005552.3). |
|------|--|

## 靶点信息

|       |   |
|-------|---|
| 研究背景  | The protein encoded by this gene is a member of a family of membrane glycoproteins. This glycoprotein provides selectins with carbohydrate ligands. It may also play a role in tumor cell metastasis. |
| 基因ID  | 3916  |
| 基因名   | LAMP1   |
| Swiss | P11279 ( <a href="https://www.uniprot.org/uniprotkb/P11279/entry">https://www.uniprot.org/uniprotkb/P11279/entry</a> )  |
| 别名    | LAMP1,CD107a,LAMPA,LGP120,LAMP1 Rabbit pAb,CD107 antigen-like family member A   |

## 产品验证



Western blot analysis of LAMP1 expressed in Mouse kidney,Rat brain,U-251MG using LAMP1 Rabbit pAb at 1:1000. Secondary antibody: HRP Goat Anti-Rabbit IgG (H+L) at 1:5000. Lysates/proteins: 30ug per lane. Blocking buffer: 5% non-fat dry milk in TBST. Detection: ECL Enhanced Kit. Exposure time: 120s.

## 实验步骤

访问官网浏览详情: [www.ablybio.cn](http://www.ablybio.cn) (<https://www.ablybio.cn/www.ablybio.cn>)