

# GDF15 Rabbit pAb

货号: AYP11395

## 产品信息

反应	Human,Mouse,Rat
宿主	Rabbit
克隆性	Polyclonal
预测反应	<b>IHC:</b> Homo sapiens <b>WB:</b> Homo sapiens <b>IF:</b> Homo sapiens <b>ChIP:</b> Homo sapiens
应用	WB IHC IF/ICC IP
推荐浓度	<b>WB:</b> 1:500 - 1:1000 <b>IHC:</b> 1:50 - 1:200 <b>IF/ICC:</b> 1:50 - 1:200 <b>IP:</b> 1:500 - 1:1000
理论分子量	34kDa
实测分子量	35KDa
形式	Liquid
保存条件	Store at -20°C. Avoid freeze / thaw cycles. Buffer: PBS with 0.01% thiomersal,50% glycerol,pH7.3.
偶联物	Unconjugated
阳性对照	PC-3,HT-1080
细胞定位	Secreted
纯化	Affinity purification

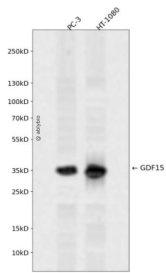
## 抗原信息

抗原信息	Recombinant fusion protein containing a sequence corresponding to amino acids 30-200 of human GDF15 (NP_004855.2).
序列	LSLAEASRASFPGPSELHSEDSRFRELRKRYEDLLTRLRANQSWEDSNTDLVPAPAVRILTPEVRLGSGGHLHLRISRALPEGLPEASRLHRLFRLSPTASRSWDVTRPLRRQLSLARPQAPALHLRLSPPPSQSDQLLAESSARPQLELHLRPQAARGRRRARANG

## 靶点信息

研究背景	The protein encoded by this gene belongs to the transforming growth factor-beta (TGF-beta) family. The protein is expressed in a broad range of cell types, acts as a pleiotropic cytokine and is involved in the stress reponse program of cells after cellular injury. Increased protein levels are associated with disease states such as tissue hypoxia, inflammation, acute injury and oxidative stress.
基因ID	9518
基因名	GDF15
Swiss	Q99988
别名	GDF15;GDF-15;MIC-1;MIC1;NAG-1;PDF;PLAB;PTGFB

## 产品验证



Western blot analysis of GDF15 expressed in PC-3,HT-1080 using GDF15 Rabbit pAb at 1:1000. Secondary antibody: HRP Goat Anti-Rabbit IgG (H+L) at 1:5000. Lysates/proteins: 30ug per lane. Blocking buffer: 5 % non-fat dry milk in TBST. Detection: ECL Enhanced Kit. Exposure time: 120s.

## 实验步骤

访问官网浏览详情: [www.ablybio.cn](http://www.ablybio.cn)