

GCLC Rabbit pAb

货号: **AYP11393**

产品信息

反应	Human,Mouse,Rat
宿主	Rabbit
克隆性	Polyclonal
预测反应	WB: Mus musculus , Gallus gallus , Struthio camelus , Rattus norvegicus , Homo sapiens
应用	WB IF/ICC
推荐浓度	WB: 1:500 - 1:3000 IF/ICC: 1:50 - 1:200
理论分子量	72kDa
实测分子量	72kDa
形式	Liquid
保存条件	Store at -20°C. Avoid freeze / thaw cycles. Buffer: PBS with 0.01% thiomersal,50% glycerol,pH7.3.
偶联物	Unconjugated
阳性对照	HepG2,Mouse kidney,Mouse liver,Mouse lung,Rat kidney,Rat liver
细胞定位	cytosol,glutamate-cysteine ligase complex,mitochondrion
纯化	Affinity purification

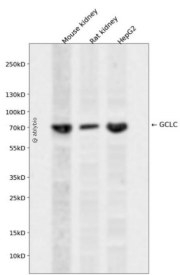
抗原信息

抗原信息	Recombinant fusion protein containing a sequence corresponding to amino acids 1-252 of human GCLC (NP_001489.1).
序列	MGLLSQGSPLSWEETKRHADHVRRHGILQFLHIYHAVKDRHKDVLKWGDEVEYMLVSFDHENKKVRLVLSGEKVLETLEQ EKGERTNPNHPTLWRPEYGSYMIEGTPGQPYGGTMSEFNTVEANMRKRRKEATSILEENQALCTITSFPRLGCPGFTLPEV KPNPVEGGASKSLFFPDEAINKHPRFSTLTRNIRHRRGEKVVINVPIFKDKNTPSPFIETFTEDDEASRASKPDHIYMDAMGF GMGNCCLQV

靶点信息

研究背景	Glutamate-cysteine ligase, also known as gamma-glutamylcysteine synthetase is the first rate-limiting enzyme of glutathione synthesis. The enzyme consists of two subunits, a heavy catalytic subunit and a light regulatory subunit. This locus encodes the catalytic subunit, while the regulatory subunit is derived from a different gene located on chromosome 1p22-p21. Mutations at this locus have been associated with hemolytic anemia due to deficiency of gamma-glutamylcysteine synthetase and susceptibility to myocardial infarction.
基因ID	2729
基因名	GCLC
Swiss	P48506
别名	GCLC;GCL;GCS;GLCL;GLCLC

产品验证



Western blot analysis of GCLC expressed in Mouse kidney, Rat kidney, HepG2 using GCLC Rabbit pAb at 1:1000. Secondary antibody: HRP Goat Anti-Rabbit IgG (H+L) at 1:5000. Lysates/proteins: 30ug per lane. Blocking buffer: 5% non-fat dry milk in TBST. Detection: ECL Enhanced Kit. Exposure time: 120s.

实验步骤

访问官网浏览详情: www.ablybio.cn