

NF- κ B p65/RelA Rabbit pAb

货号: **AYP11392**

产品信息

反应	Human,Mouse,Rat
宿主	Rabbit
克隆性	Polyclonal
预测反应	WB: Gallus gallus , Sus scrofa , Rattus norvegicus , Mus musculus IP: Sus scrofa IF: Rattus norvegicus IHC: Rattus norvegicus
应用	WB IHC IF/ICC
推荐浓度	WB: 1:500 - 1:1000 IHC: 1:50 - 1:200 IF/ICC: 1:50 - 1:200
理论分子量	58kDa/59kDa/60kDa
实测分子量	65KDa
形式	Liquid
保存条件	Store at -20°C. Avoid freeze / thaw cycles. Buffer: PBS with 0.02% sodium azide,50% glycerol,pH7.3.
偶联物	Unconjugated
阳性对照	HeLa,293T,Rat lung
细胞定位	Cytoplasm,Nucleus
纯化	Affinity purification

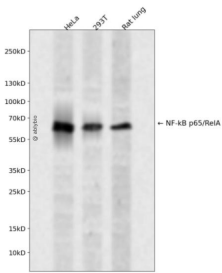
抗原信息

抗原信息	Recombinant fusion protein containing a sequence corresponding to amino acids 1-200 of human NF- κ B p65/RelA (NP_068810.3).
序列	MDELFLIFPAEPAQASGPYVEIIEQPKQRGMRFYKCEGRSAGSIPGERSTDTTKTHPTIKINGYTGPGTVRISLVTKDPPH RPHPELVGKDCRDGFYEAELCPDRCIHSFQNLGIQCVKKRDLEQAISQRIQTNNPFQVPIEEQRGDYDLNAVRLCFQVT VRDPSGRPLRLPPVLSHPIFDNRAPNTAELKICRVN

靶点信息

研究背景	NF-kappa-B is a ubiquitous transcription factor involved in several biological processes. It is held in the cytoplasm in an inactive state by specific inhibitors. Upon degradation of the inhibitor, NF-kappa-B moves to the nucleus and activates transcription of specific genes. NF-kappa-B is composed of NFKB1 or NFKB2 bound to either REL, RELA, or RELB. The most abundant form of NF-kappa-B is NFKB1 complexed with the product of this gene, RELA. Four transcript variants encoding different isoforms have been found for this gene.
基因ID	5970
基因名	RELA
Swiss	Q04206
别名	NFKB3;p65;NF-kB p65;RELA;CMCU

产品验证



Western blot analysis of NF-kB p65/RelA expressed in HeLa,293T,Rat lung using NF-kB p65/RelA Rabbit pAb at 1:1000. Secondary antibody: HRP Goat Anti-Rabbit IgG (H+L) at 1:5000. Lysates/proteins: 30ug per lane. Blocking buffer: 5% non-fat dry milk in TBST. Detection: ECL Enhanced Kit. Exposure time: 120s.

实验步骤

访问官网浏览详情: www.ablybio.cn