

Neutrophil Elastase (ELANE) Rabbit pAb

货号: AYP11388

产品信息

反应	Human,Mouse,Rat
宿主	Rabbit
克隆性	Polyclonal
预测反应	WB: Homo sapiens , Rattus norvegicus IF: Mus musculus , Homo sapiens
应用	WB IHC IF/ICC
推荐浓度	WB: 1:500 - 1:1000 IHC: 1:50 - 1:200 IF/ICC: 1:50 - 1:200
理论分子量	28kDa
实测分子量	30KDa
形式	Liquid
保存条件	Store at -20°C. Avoid freeze / thaw cycles. Buffer: PBS with 0.05% proclin300,50% glycerol,pH7.3.
偶联物	Unconjugated
阳性对照	Rat spleen
细胞定位	cell surface,cytoplasm,cytosol,extracellular exosome,extracellular region,extracellular space,phagocytic vesicle
纯化	Affinity purification

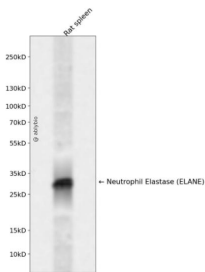
抗原信息

抗原信息	A synthetic peptide corresponding to a sequence within amino acids 168-267 of human Neutrophil Elastase (ELANE) (NP_001963.1).
序列	VLQELNVTVVVTSLCRRSNVCTLVRGRQAGVCFGDSGSP LVCNGLIHGIA SFVRGGCASGLYPDAFAPVAQFVNWIDSIIQR SEDNPCPHRPDPDPASRTH

靶点信息

研究背景	Elastases form a subfamily of serine proteases that hydrolyze many proteins in addition to elastin. Humans have six elastase genes which encode structurally similar proteins. The encoded preproprotein is proteolytically processed to generate the active protease. Following activation, this protease hydrolyzes proteins within specialized neutrophil lysosomes, called azurophil granules, as well as proteins of the extracellular matrix. The enzyme may play a role in degenerative and inflammatory diseases through proteolysis of collagen-IV and elastin. This protein also degrades the outer membrane protein A (OmpA) of <i>E. coli</i> as well as the virulence factors of such bacteria as <i>Shigella</i> , <i>Salmonella</i> and <i>Yersinia</i> . Mutations in this gene are associated with cyclic neutropenia and severe congenital neutropenia (SCN). This gene is present in a gene cluster on chromosome 19.
基因ID	1991
基因名	ELANE
Swiss	P08246
别名	ELANE;ELA2;GE;HLE;HNE;NE;PMN-E;SCN1

产品验证



Western blot analysis of Neutrophil Elastase (ELANE) expressed in Rat spleen using Neutrophil Elastase (ELANE) Rabbit pAb at 1:1000. Secondary antibody: HRP Goat Anti-Rabbit IgG (H+L) at 1:5000. Lysates/proteins: 30ug per lane. Blocking buffer: 5% non-fat dry milk in TBST. Detection: ECL Enhanced Kit. Exposure time: 120s.

实验步骤

访问官网浏览详情: www.ablybio.cn