

NOD2 Rabbit pAb

货号: **AYP11381**

产品信息

反应	Human,Mouse,Rat
宿主	Rabbit
克隆性	Polyclonal
预测反应	WB: Homo sapiens , Sus scrofa , Mus musculus , rat IHC: Mus musculus
应用	WB IHC IF/ICC
推荐浓度	WB: 1:500 - 1:2000 IHC: 1:50 - 1:200 IF/ICC: 1:50 - 1:200
理论分子量	22kDa/112kDa/115kDa
实测分子量	100KDa
形式	Liquid
保存条件	Store at -20°C. Avoid freeze / thaw cycles. Buffer: PBS with 0.01% thiomersal,50% glycerol,pH7.3.
偶联物	Unconjugated
阳性对照	Mouse kidney,Rat spleen
细胞定位	basolateral plasma membrane,cell surface,cytoplasm,cytoskeleton,cytosol,Golgi apparatus,mitochondrion ,phagocytic vesicle,plasma membrane
纯化	Affinity purification

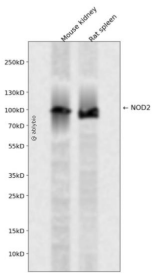
抗原信息

抗原信息	Recombinant fusion protein containing a sequence corresponding to amino acids 611-910 of human NOD 2 (NP_071445.1).
序列	AAFYLAALSADVPPALLRHLFNCGRPGNSPMARLLPTMCIQASEGKDSSVAALLQKAEPHNLQITAAFLAGLLSREHWGLLA ECQTSEKALLRRQACARWCLARSLRKHFSIPPAAPGEAKSVHAMPGFIWLIRSLYEMQEERLARKAARGLNVGHLKLTFC SVGPTECAALAFVLQHLLRRPVALQLDYNSVGDIGVEQLLPCLGVCKALYLRDNNISDRGICKLIECALHCEQLQKLALFNNKL TDGCAHSMAKLLACRQNFALRLGNYYITAAGAQVLAEGLRGNTSLQFLGFWGNR

靶点信息

研究背景	This gene is a member of the Nod1/Apaf-1 family and encodes a protein with two caspase recruitment (CARD) domains and six leucine-rich repeats (LRRs). The protein is primarily expressed in the peripheral blood leukocytes. It plays a role in the immune response to intracellular bacterial lipopolysaccharides (LPS) by recognizing the muramyl dipeptide (MDP) derived from them and activating the NF- κ B protein. Mutations in this gene have been associated with Crohn disease and Blau syndrome. Alternatively spliced transcript variants encoding distinct isoforms have been found for this gene.
基因ID	64127
基因名	NOD2
Swiss	Q9HC29
别名	NOD2;ACUG;BLAU;BLAUS;CARD15;CD;CLR16.3;IBD1;NLRC2;NOD2B;PSORAS1;YAOS

产品验证



Western blot analysis of NOD2 expressed in Mouse kidney, Rat spleen using NOD2 Rabbit pAb at 1:1000. Secondary antibody: HRP Goat Anti-Rabbit IgG (H+L) at 1:5000. Lysates/proteins: 30ug per lane. Blocking buffer: 5% non-fat dry milk in TBST. Detection: ECL Enhanced Kit. Exposure time: 120s.

实验步骤

访问官网浏览详情: www.ablybio.cn