

# Estrogen Receptor beta Rabbit pAb

货号: **AYP11378**

## 产品信息

反应	Human,Mouse,Rat
宿主	Rabbit
克隆性	Polyclonal
预测反应	<b>WB:</b> Mus musculus , Gallus gallus , Homo sapiens <b>IF:</b> Danio rerio
应用	<a href="#">WB</a>
推荐浓度	<b>WB:</b> 1:1000 - 1:5000
理论分子量	35-59kDa
实测分子量	59KDa
形式	Liquid
保存条件	Store at -20°C. Avoid freeze / thaw cycles. Buffer: PBS with 0.05% proclin300,50% glycerol,pH7.3.
偶联物	Unconjugated
阳性对照	MCF7,Daudi,NIH/3T3,Mouse ovary,Rat uterus
细胞定位	Nucleus
纯化	Affinity purification

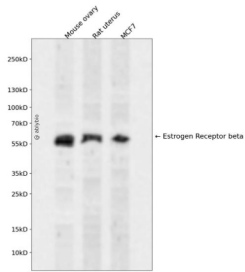
## 抗原信息

抗原信息	Recombinant fusion protein containing a sequence corresponding to amino acids 1-280 of human Estrogen Receptor beta (NP_001201832.1).
序列	MDIKNSPSSLNSPSSYNCSQSILPLEHGSYIPSSYVDSHHEYPAMTFYSPAVMNYSPSNVTNLEGGPGRQTTSPNVLWPT PGHLSPLVVHRQLSHLYAEPQKSPWCEARSLEHTLPVNRETLKRKVSNGRCASPVTGPGSKRDAHFCVCSDYASGYHY GVWSCEGCKAFFKRSIQGHNDYICPATNQCTIDKNRRKSCQACRLRKCYEVMVKCGSRRERRCGYRLVRRQRSADQLH CAGKAKRSGGHAPRVRELLLDALSPEQLVLTLLLEAEPHV

## 靶点信息

研究背景	This gene encodes a member of the family of estrogen receptors and superfamily of nuclear receptor transcription factors. The gene product contains an N-terminal DNA binding domain and C-terminal ligand binding domain and is localized to the nucleus, cytoplasm, and mitochondria. Upon binding to 17beta-estradiol or related ligands, the encoded protein forms homo- or hetero-dimers that interact with specific DNA sequences to activate transcription. Some isoforms dominantly inhibit the activity of other estrogen receptor or family members. Several alternatively spliced transcript variants of this gene have been described, but the full-length nature of some of these variants has not been fully characterized.
基因ID	2100
基因名	ESR2
Swiss	Q92731
别名	ESR2;ER-BETA;ESR-BETA;ESRB;ESTRB;Erb;NR3A2

## 产品验证



Western blot analysis of Estrogen Receptor beta expressed in Mouse ovary, Rat uterus, MCF7 using Estrogen Receptor beta Rabbit pAb at 1:1000. Secondary antibody: HRP Goat Anti-Rabbit IgG (H+L) at 1:5000. Lysates/proteins: 30ug per lane. Blocking buffer: 5% non-fat dry milk in TBST. Detection: ECL Enhanced Kit. Exposure time: 120s.

## 实验步骤

访问官网浏览详情: [www.ablybio.cn](http://www.ablybio.cn)