

— ABLYBIO, Help Your Research



PLK1 Rabbit pAb

货号: **AYP11377**

产品信息

反应	Human,Mouse,Rat
宿主	Rabbit
克隆性	Polyclonal
预测反应	WB: Homo sapiens IHC: Homo sapiens IF: Mus musculus , Homo sapiens
应用	WB IHC IF/ICC
推荐浓度	WB: 1:500 - 1:1000 IHC: 1:50 - 1:200 IF/ICC: 1:50 - 1:200
理论分子量	68kDa
实测分子量	62KDa
形式	Liquid
保存条件	Store at -20°C. Avoid freeze / thaw cycles. Buffer: PBS with 0.02% sodium azide,50% glycerol,pH7.3.
偶联物	Unconjugated
阳性对照	HT-29,Mouse liver
细胞定位	Chromosome,Cytoplasm,Midbody,Nucleus,centromere,centrosome,cytoskeleton,kinetochore,microtubule organizing center,spindle
纯化	Affinity purification

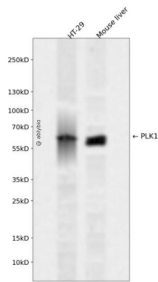
抗原信息

抗原信息	Recombinant fusion protein containing a sequence corresponding to amino acids 304-603 of human PLK1 (NP_005021.2).
------	--------------------------------------------------------------------------------------------------------------------

靶点信息

研究背景	The Ser/Thr protein kinase encoded by this gene belongs to the CDC5/Polo subfamily. It is highly expressed during mitosis and elevated levels are found in many different types of cancer. Depletion of this protein in cancer cells dramatically inhibited cell proliferation and induced apoptosis; hence, it is a target for cancer therapy.
基因ID	5347
基因名	PLK1
Swiss	P53350 (https://www.uniprot.org/uniprotkb/P53350/entry)
别名	PLK1,PLK,STPK13,PLK1 Rabbit pAb,Polo-like kinase 1,Serine/threonine-protein kinase 13

产品验证



Western blot analysis of PLK1 expressed in HT-29, Mouse liver using PLK1 Rabbit pAb at 1:1000. Secondary antibody: HRP Goat Anti-Rabbit IgG (H+L) at 1:5000. Lysates/proteins: 30ug per lane. Blocking buffer: 5% non-fat dry milk in TBST. Detection: ECL Enhanced Kit. Exposure time: 120s.

实验步骤

访问官网浏览详情: www.ablybio.cn (<https://www.ablybio.cn/www.ablybio.cn>)