

# Bcl-2 Rabbit pAb

货号: **AYP11368**

## 产品信息

|       |   |
|-------|---|
| 反应    | Human,Mouse,Rat   |
| 宿主    | Rabbit  |
| 克隆性   | Polyclonal  |
| 预测反应  | <b>WB:</b> Sus scrofa , Bos taurus , Bovine , Rattus norvegicus , Homo sapiens , mice                     |
| 应用    | <a href="#">WB</a> <a href="#">IHC</a>  |
| 推荐浓度  | <b>WB:</b> 1:500 - 1:1000<br><b>IHC:</b> 1:50 - 1:200   |
| 理论分子量 | 22kDa/26kDa   |
| 实测分子量 | 26KDa   |
| 形式    | Liquid  |
| 保存条件  | Store at -20°C. Avoid freeze / thaw cycles.<br>Buffer: PBS with 0.01% thiomersal,50% glycerol,pH7.3.      |
| 偶联物   | Unconjugated  |
| 阳性对照  | 293T,Rat lung   |
| 细胞定位  | Endoplasmic reticulum membrane,Mitochondrion outer membrane,Nucleus membrane,Single-pass membrane protein |
| 纯化    | Affinity purification   |

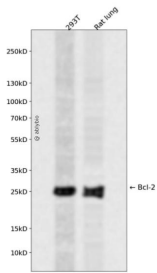
## 抗原信息

|      |   |
|------|---|
| 抗原信息 | Recombinant fusion protein containing a sequence corresponding to amino acids 1-239 of human Bcl-2 (P10415).  |
| 序列   | MAHAGRTGYDNREIVMKYIHYKLSQRGYEWDAAGDVGAAPPGAAPAGIFSSQPGHTPHPAASRDVPARTSPLQTPAAPGAAAGPALSPVPPVVHLTLRQAGDDFSRRYRRDFAEMSSQLHLTPFTARGRFATVVEELFRDGVNWGRIVAFEFGGVMCVESVNREMSPLVDNIALWMTEYLNRLHHTWIQDNGGWDAFVELYGPSMRPLDFSWLSLKTLLSLALVGACITLGAYLGHK |

## 靶点信息

|       |   |
|-------|---|
| 研究背景  | This gene encodes an integral outer mitochondrial membrane protein that blocks the apoptotic death of some cells such as lymphocytes. Constitutive expression of BCL2, such as in the case of translocation of BCL2 to Ig heavy chain locus, is thought to be the cause of follicular lymphoma. Alternative splicing results in multiple transcript variants. |
| 基因ID  | 596   |
| 基因名   | BCL2  |
| Swiss | P10415  |
| 别名    | Bcl-2;PPP1R50;BCL2  |

## 产品验证



Western blot analysis of Bcl-2 expressed in 293T,Rat lung using Bcl-2 Rabbit pAb at 1:1000. Secondary antibody: HRP Goat Anti-Rabbit IgG (H+L) at 1:5000. Lysates/proteins: 30ug per lane. Blocking buffer: 5% non-fat dry milk in TBST. Detection: ECL Enhanced Kit. Exposure time: 120s.

## 实验步骤

访问官网浏览详情: [www.ablybio.cn](http://www.ablybio.cn)