

EpCAM Rabbit pAb

货号: AYP11348

产品信息

反应	Human,Mouse,Rat
宿主	Rabbit
克隆性	Polyclonal
预测反应	WB: Mouse lung tumor , Mus musculus , Homo sapiens IHC: Mouse adenocarcinoma , Mus musculus , Homo sapiens IF: Mus musculus,Homo sapiens
应用	WB IF/ICC
推荐浓度	WB: 1:500 - 1:1000 IF/ICC: 1:50 - 1:200
理论分子量	34kDa
实测分子量	35-45KDa
形式	Liquid
保存条件	Store at -20°C. Avoid freeze / thaw cycles. Buffer: PBS with 0.05% proclin300,50% glycerol,pH7.3.
偶联物	Unconjugated
阳性对照	HT-29,Mouse colon,Rat colon
细胞定位	Cell junction,Lateral cell membrane,Single-pass type I membrane protein,tight junction
纯化	Affinity purification

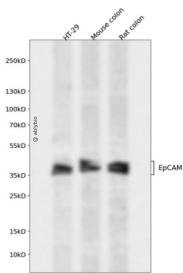
抗原信息

抗原信息	Recombinant fusion protein containing a sequence corresponding to amino acids 24-265 of human EpCAM (NP_002345.2).
序列	QEECVCENYKLAIVNCFVNNRQCQCTSVGAQNTVICSKLAAKCLVMKAEMNGSKLGRRAKPEGALQNNNDGLYDPDCDE SGLFKAKQCNGTSMCWCVNTAGVRRRTDKDTEITCSERVRTYWIIIELKHKAREKPYDSKSLRTALQKEITTRYQLDPKFITSI LYENNVITIDLQNSSQKTQNDVDIADVAYYFEKDKGESLFHSHKMDLTVNGEQLDLDPGQTLIYYVDEKAPEFSMQGL K

靶点信息

研究背景	This gene encodes a carcinoma-associated antigen and is a member of a family that includes at least two type I membrane proteins. This antigen is expressed on most normal epithelial cells and gastrointestinal carcinomas and functions as a homotypic calcium-independent cell adhesion molecule. The antigen is being used as a target for immunotherapy treatment of human carcinomas. Mutations in this gene result in congenital tufting enteropathy.
基因ID	4072
基因名	EPCAM
Swiss	P16422
别名	EPCAM;DIAR5;EGP-2;EGP314;EGP40;ESA;HNPCC8;KS1/4;KSA;M4S1;MIC18;MK-1;TACSTD1;TROP1

产品验证



Western blot analysis of EpCAM expressed in HT-29, Mouse colon, Rat colon using EpCAM Rabbit pAb at 1:1000. Secondary antibody: HRP Goat Anti-Rabbit IgG (H+L) at 1:5000. Lysates/proteins: 30ug per lane. Blocking buffer: 5% non-fat dry milk in TBST. Detection: ECL Enhanced Kit. Exposure time: 120s.

实验步骤

访问官网浏览详情: www.ablybio.cn