

Phospho-EGFR-Y1068 Rabbit pAb

货号: **AYP11344**

产品信息

反应	Human,Mouse
宿主	Rabbit
克隆性	Polyclonal
预测反应	WB: Human non small cell lung adenocarcinoma cell , Homo sapiens , Mus musculus IHC: Human non small cell lung adenocarcinoma cell , Homo sapiens
应用	WB IP
推荐浓度	WB: 1:1000 - 1:2000 IP: 1:50 - 1:100
理论分子量	44kDa/69kDa/77kDa/134kDa
实测分子量	185kDa
形式	Liquid
保存条件	Store at -20°C. Avoid freeze / thaw cycles. Buffer: PBS with 0.02% sodium azide,50% glycerol,pH7.3.
偶联物	Unconjugated
阳性对照	HeLa
细胞定位	Cell membrane,Endoplasmic reticulum membrane,Endosome,Endosome membrane,Golgi apparatus membrane,Nucleus membrane,Nucleus,Secreted,Single-pass type I membrane protein
纯化	Affinity purification

抗原信息

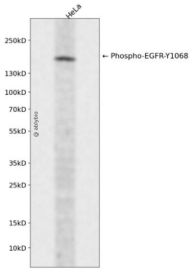
抗原信息	A synthetic phosphorylated peptide around Y1068 of human EGFR (NP_005219.2).
序列	PEYIN

靶点信息

研究背景	The protein encoded by this gene is a transmembrane glycoprotein that is a member of the protein kinase superfamily. This protein is a receptor for members of the epidermal growth factor family. EGFR is a cell surface protein that binds to epidermal growth factor. Binding of the protein to a ligand induces receptor dimerization and tyrosine autophosphorylation and leads to cell proliferation. Mutations in this gene are associated with lung cancer.
------	---

基因ID	1956
基因名	EGFR
Swiss	P00533
别名	EGFR;ERBB;ERBB1;HER1;NISBD2;PIG61;mENA

产品验证



Western blot analysis of Phospho-EGFR-Y1068 expressed in HeLa using Phospho-EGFR-Y1068 Rabbit p Ab at 1:1000. Secondary antibody: HRP Goat Anti-Rabbit IgG (H+L) at 1:5000. Lysates/proteins: 30ug per lane. Blocking buffer: 5% non-fat dry milk in TBST. Detection: ECL Enhanced Kit. Exposure time: 12 0s.

实验步骤

访问官网浏览详情: www.ablybio.cn