

# Phospho-CREB1-S133 Rabbit pAb

货号: **AYP11343**

## 产品信息

反应	Human,Mouse,Rat
宿主	Rabbit
克隆性	Polyclonal
预测反应	<b>WB:</b> Mouse kidney , Homo sapiens , Mus musculus , Rattus norvegicus <b>IF:</b> Mouse kidney , Homo sapiens , Mus musculus <b>IHC:</b> Homo sapiens
应用	<a href="#">WB</a> <a href="#">IHC</a>
推荐浓度	<b>WB:</b> 1:500 - 1:1000 <b>IHC:</b> 1:50 - 1:100
理论分子量	25kDa/35kDa/36kDa
实测分子量	40KDa
形式	Liquid
保存条件	Store at -20°C. Avoid freeze / thaw cycles. Buffer: PBS with 0.01% thiomersal,50% glycerol,pH7.3.
偶联物	Unconjugated
阳性对照	NIH/3T3
细胞定位	Nucleus
纯化	Affinity purification

## 抗原信息

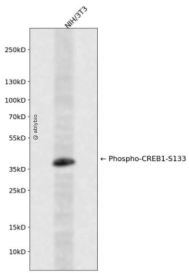
抗原信息	A synthetic phosphorylated peptide around S133 of human CREB1 (NP_604391.1).
序列	RPSYR

## 靶点信息

研究背景	This gene encodes a transcription factor that is a member of the leucine zipper family of DNA binding proteins. This protein binds as a homodimer to the cAMP-responsive element, an octameric palindrome. The protein is phosphorylated by several protein kinases, and induces transcription of genes in response to hormonal stimulation of the cAMP pathway. Alternate splicing of this gene results in several transcript variants encoding different isoforms.
------	--

基因ID	1385
基因名	CREB1
Swiss	P16220
别名	CREB1;CREB;CREB-1

## 产品验证



Western blot analysis of Phospho-CREB1-S133 expressed in NIH/3T3 using Phospho-CREB1-S133 Rabbit pAb at 1:1000. Secondary antibody: HRP Goat Anti-Rabbit IgG (H+L) at 1:5000. Lysates/proteins: 30ug per lane. Blocking buffer: 5% non-fat dry milk in TBST. Detection: ECL Enhanced Kit. Exposure time: 12 0s.

## 实验步骤

访问官网浏览详情: [www.ablybio.cn](http://www.ablybio.cn)