

— ABLYBIO, Help Your Research



Insulin Rabbit pAb

货号: **AYP11321**

产品信息

反应	Human,Mouse,Rat
宿主	Rabbit
克隆性	Polyclonal
预测反应	IF: Mus musculus , Homo sapiens IHC: Mus musculus , Homo sapiens WB: Mus musculus
应用	WB IHC IF/ICC
推荐浓度	WB: 1:500 - 1:1000 IHC: 1:50 - 1:200 IF/ICC: 1:50 - 1:200
理论分子量	11kDa/21kDa
实测分子量	6KDa
形式	Liquid
保存条件	Store at -20°C. Avoid freeze / thaw cycles. Buffer: PBS with 0.05% proclin300,50% glycerol,pH7.3.
偶联物	Unconjugated
阳性对照	Mouse pancreas,Rat pancreas
细胞定位	Secreted
纯化	Affinity purification

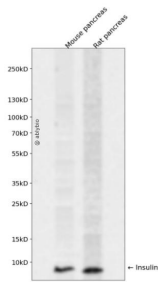
抗原信息

抗原信息	Recombinant fusion protein containing a sequence corresponding to amino acids 25-110 of human INS (N P_000198.1).
------	---

靶点信息

研究背景	After removal of the precursor signal peptide, proinsulin is post-translationally cleaved into three peptides: the B chain and A chain peptides, which are covalently linked via two disulfide bonds to form insulin, and C-peptide. Binding of insulin to the insulin receptor (INSR) stimulates glucose uptake. A multitude of mutant alleles with phenotypic effects have been identified. There is a read-through gene, INS-IGF2, which overlaps with this gene at the 5' region and with the IGF2 gene at the 3' region. Alternative splicing results in multiple transcript variants.
基因ID	3630
基因名	INS
Swiss	P01308 (https://www.uniprot.org/uniprotkb/P01308/entry)
别名	IDDM, IDDM1, IDDM2, ILPR, IRDN, MODY10, INS, Insulin, Insulin Rabbit pAb

产品验证



Western blot analysis of Insulin expressed in Mouse pancreas, Rat pancreas using Insulin Rabbit pAb at 1:1000. Secondary antibody: HRP Goat Anti-Rabbit IgG (H+L) at 1:5000. Lysates/proteins: 30ug per lane. Blocking buffer: 5% non-fat dry milk in TBST. Detection: ECL Enhanced Kit. Exposure time: 120s.

实验步骤

访问官网浏览详情: www.ablybio.cn (<https://www.ablybio.cn/>www.ablybio.cn)