

Phospho-ATM-S1981 Rabbit pAb

货号: **AYP11313**

产品信息

反应	Human,Mouse
宿主	Rabbit
克隆性	Polyclonal
预测反应	WB: Homo sapiens , Mus musculus IF: Homo sapiens
应用	WB
推荐浓度	WB: 1:500 - 1:1000
理论分子量	350kDa
实测分子量	370KDa
形式	Liquid
保存条件	Store at -20°C. Avoid freeze / thaw cycles. Buffer: PBS with 0.01% thiomersal,50% glycerol,pH7.3.
偶联物	Unconjugated
阳性对照	293T,NIH/3T3
细胞定位	Cytoplasmic vesicle,Nucleus
纯化	Affinity purification

抗原信息

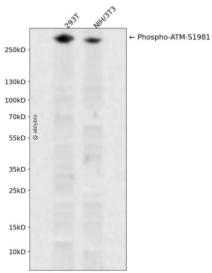
抗原信息	A synthetic phosphorylated peptide around S1981 of human ATM (NP_000042.3).
序列	EGSQS

靶点信息

研究背景	The protein encoded by this gene belongs to the PI3/PI4-kinase family. This protein is an important cell cycle checkpoint kinase that phosphorylates; thus, it functions as a regulator of a wide variety of downstream proteins, including tumor suppressor proteins p53 and BRCA1, checkpoint kinase CHK2, checkpoint proteins RAD17 and RAD9, and DNA repair protein NBS1. This protein and the closely related kinase ATR are thought to be master controllers of cell cycle checkpoint signaling pathways that are required for cell response to DNA damage and for genome stability. Mutations in this gene are associated with ataxia telangiectasia, an autosomal recessive disorder.
------	---

基因ID	472
基因名	ATM
Swiss	Q13315
别名	AT1;ATA;ATC;ATD;ATDC;ATE;TEL1;TELO1;ATM

产品验证



Western blot analysis of Phospho-ATM-S1981 expressed in 293T,NIH/3T3 using Phospho-ATM-S1981 Rabbit pAb at 1:1000. Secondary antibody: HRP Goat Anti-Rabbit IgG (H+L) at 1:5000. Lysates/proteins: 30ug per lane. Blocking buffer: 5% non-fat dry milk in TBST. Detection: ECL Enhanced Kit. Exposure time: 120s.

实验步骤

访问官网浏览详情: www.ablybio.cn