

# CPT1B Rabbit pAb

货号: **AYP11303**

## 产品信息

反应	Human,Mouse,Rat
宿主	Rabbit
克隆性	Polyclonal
预测反应	<b>WB:</b> Mouse brown fat cells , Mus musculus , Homo sapiens , Macaca mulatta
应用	<a href="#">WB</a> <a href="#">IHC</a>
推荐浓度	<b>WB:</b> 1:100 - 1:500 <b>IHC:</b> 1:50 - 1:200
理论分子量	66kDa/78kDa/83kDa/87kDa
实测分子量	75KDa
形式	Liquid
保存条件	Store at -20°C. Avoid freeze / thaw cycles. Buffer: PBS with 0.02% sodium azide,50% glycerol,pH7.3.
偶联物	Unconjugated
阳性对照	Mouse heart
细胞定位	Mitochondrion outer membrane,Multi-pass membrane protein
纯化	Affinity purification

## 抗原信息

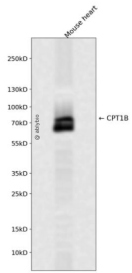
抗原信息	Recombinant fusion protein containing a sequence corresponding to amino acids 533-772 of human CPT1 B (NP_004368.1).
序列	SYQVAKALADDVELYCFQLPFGKGLIKKCRTPDAFVQIALQLAHFRDRGKFCLTYEASMTRMFREGRTETVRSCTSESTAFVQAMMEGSHTKADLRDLFQKAAKKHQNMRYRLAMTGAGIDRHLFCLYLVSXYLVSSPFLAEVLSEPWRLSTSQIPQSQIRMFDPHQHPNHLGAGGGGFPVADDGYGVSYMIAGENTIFFHISSEKSSSETNAQRFNGHIRKALLDIADLFQVPKAYS

## 靶点信息

研究背景	The protein encoded by this gene, a member of the carnitine/choline acetyltransferase family, is the rate-controlling enzyme of the long-chain fatty acid beta-oxidation pathway in muscle mitochondria. This enzyme is required for the net transport of long-chain fatty acyl-CoAs from the cytoplasm into the mitochondria. Multiple transcript variants encoding different isoforms have been found for this gene, and read-through transcripts are expressed from the upstream locus that include exons from this gene.
------	--

基因ID	1375
基因名	CPT1B
Swiss	Q92523
别名	CPT1B;CPT1-M;CPT1M;CPTI;CPTI-M;M-CPT1;MCCPT1;MCPT1

## 产品验证



Western blot analysis of CPT1B expressed in Mouse heart using CPT1B Rabbit pAb at 1:1000. Secondary antibody: HRP Goat Anti-Rabbit IgG (H+L) at 1:5000. Lysates/proteins: 30ug per lane. Blocking buffer: 5% non-fat dry milk in TBST. Detection: ECL Enhanced Kit. Exposure time: 120s.

## 实验步骤

访问官网浏览详情: [www.ablybio.cn](http://www.ablybio.cn)