

Phospho-eIF4EBP1-T37/46 Rabbit pAb

货号: **AYP11271**

产品信息

反应	Human,Mouse,Rat
宿主	Rabbit
克隆性	Polyclonal
预测反应	WB: Homo sapiens , Mus musculus , Bombyx mori Linnaeus , Macaca mulatta
应用	WB IHC
推荐浓度	WB: 1:500 - 1:1000 IHC: 1:50 - 1:200
理论分子量	12kDa
实测分子量	15KDa-20KDa
形式	Liquid
保存条件	Store at -20°C. Avoid freeze / thaw cycles. Buffer: PBS with 0.02% sodium azide,50% glycerol,pH7.3.
偶联物	Unconjugated
阳性对照	HeLa,NIH/3T3,C6
细胞定位	cytoplasm,cytosol
纯化	Affinity purification

抗原信息

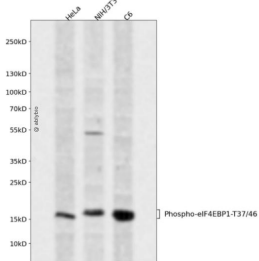
抗原信息	A synthetic phosphorylated peptide around T37 & T46 of human eIF4EBP1 (NP_004086.1).
序列	STTPGGTLFSTT

靶点信息

研究背景	This gene encodes one member of a family of translation repressor proteins. The protein directly interacts with eukaryotic translation initiation factor 4E (eIF4E), which is a limiting component of the multisubunit complex that recruits 40S ribosomal subunits to the 5' end of mRNAs. Interaction of this protein with eIF4E inhibits complex assembly and represses translation. This protein is phosphorylated in response to various signals including UV irradiation and insulin signaling, resulting in its dissociation from eIF4E and activation of mRNA translation.
基因ID	1978

基因名	EIF4EBP1
Swiss	Q13541
别名	4E-BP1;4EBP1;BP-1;PHAS-I;EIF4EBP1

产品验证



Western blot analysis of Phospho-eIF4EBP1-T37/46 expressed in HeLa,NIH/3T3,C6 using Phospho-eIF4EBP1-T37/46 Rabbit pAb at 1:1000. Secondary antibody: HRP Goat Anti-Rabbit IgG (H+L) at 1:5000. Lysates/proteins: 30ug per lane. Blocking buffer: 5% non-fat dry milk in TBST. Detection: ECL Enhanced Kit. Exposure time: 120s.

实验步骤

访问官网浏览详情: www.ablybio.cn