

# Alpha-Fetoprotein (AFP) Rabbit pAb

货号: **AYP11268**

## 产品信息

反应	Human,Mouse,Rat
宿主	Rabbit
克隆性	Polyclonal
预测反应	<b>IHC:</b> Murine liver , Mus musculus , Homo sapiens <b>IF:</b> Homo sapiens , Mus musculus <b>WB:</b> Homo sapiens , Mus musculus
应用	WB
推荐浓度	<b>WB:</b> 1:500 - 1:2000
理论分子量	68kDa
实测分子量	68kDa
形式	Liquid
保存条件	Store at -20°C. Avoid freeze / thaw cycles. Buffer: PBS with 0.02% sodium azide,50% glycerol,pH7.3.
偶联物	Unconjugated
阳性对照	Mouse liver,Mouse kidney,Rat liver,Rat brain
细胞定位	Secreted
纯化	Affinity purification

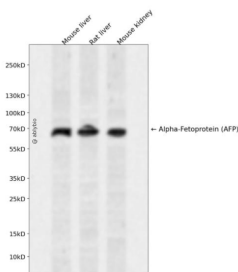
## 抗原信息

抗原信息	Recombinant fusion protein containing a sequence corresponding to amino acids 360-609 of human Alpha-Fetoprotein (Alpha-Fetoprotein (AFP)) (NP_001125.1).
序列	RRHPQLAVSVILRVAKGYQELLEKCFQTENPLECQDKGEEELQKYIQESQALAKRSCGLFQKLGEYYLQNAFLVAYTKKAPQ LTSSSELMATRKMMAATAATCCQLSEDKLLACGEGAADIIIGHLCIRHEMTPVNPVGVCCTSSYANRRPCFSSLVDETYVP PAFSDDKFIFHKDLCQAQGVALQTMKQEFLLINLVKQKPKITEEQLEAVIADFSGLLEKCCQGQEQEVCFEEGQKLISKTRA ALGV

## 靶点信息

研究背景	This gene encodes alpha-fetoprotein, a major plasma protein produced by the yolk sac and the liver during fetal life. Alpha-fetoprotein expression in adults is often associated with hepatoma or teratoma. However, hereditary persistence of alpha-fetoprotein may also be found in individuals with no obvious pathology. The protein is thought to be the fetal counterpart of serum albumin, and the alpha-fetoprotein and albumin genes are present in tandem in the same transcriptional orientation on chromosome 4. Alpha-fetoprotein is found in monomeric as well as dimeric and trimeric forms, and binds copper, nickel, fatty acids and bilirubin. The level of alpha-fetoprotein in amniotic fluid is used to measure renal loss of protein to screen for spina bifida and anencephaly.
基因ID	174
基因名	AFP
Swiss	P02771
别名	AFPD;FETA;HPAFP;AFP

## 产品验证



Western blot analysis of Alpha-Fetoprotein (AFP) expressed in Mouse liver, Rat liver, Mouse kidney using Alpha-Fetoprotein (AFP) Rabbit pAb at 1:1000. Secondary antibody: HRP Goat Anti-Rabbit Ig G (H+L) at 1:5000. Lysates/proteins: 30ug per lane. Blocking buffer: 5% non-fat dry milk in TBST. Detection: ECL Enhanced Kit. Exposure time: 120s.

## 实验步骤

访问官网浏览详情: [www.ablybio.cn](http://www.ablybio.cn)