

NMDAR2A Rabbit pAb

货号: **AYP11263**

产品信息

反应	Mouse,Rat
宿主	Rabbit
克隆性	Polyclonal
预测反应	WB: mouse brain , Homo sapiens , Mus musculus , Rattus norvegicus
应用	WB IF/ICC
推荐浓度	WB: 1:500 - 1:1000 IF/ICC: 1:50 - 1:200
理论分子量	144kDa/165kDa
实测分子量	180KDa
形式	Liquid
保存条件	Store at -20°C. Avoid freeze / thaw cycles. Buffer: PBS with 0.02% sodium azide,50% glycerol,pH7.3.
偶联物	Unconjugated
阳性对照	Mouse brain,Rat brain
细胞定位	Cell junction,Cell membrane,Multi-pass membrane protein,postsynaptic cell membrane,synapse
纯化	Affinity purification

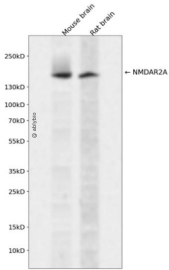
抗原信息

抗原信息	Recombinant fusion protein containing a sequence corresponding to amino acids 1130-1400 of human NMDAR2A (NP_000824.1).
序列	LDPPQFVENVTLPENVDFFDPYQDPSENFRKGDSTLPMNRNPLHNEEGLSNNDQYKLYSKHFTLKDKGSPHSETSERYR QNSTHCRSCLSNMPTYSGHFTMRSPFKCDACLRMGNLYDIDEDQMLQETGNPATGEQVYQQDWAQNNALQLQKNKLR ISRQHSYDNIVDKPRELDLSRPSRSISLKDRERLLEGNFYGSLFSVPSSKLSGKKSSLPQGLEDSKRSKSLLPDHTSDNPFL HSHRDDQRLVIGRCPSPDPYKHSLPSQAVNDSY

靶点信息

研究背景	This gene encodes a member of the glutamate-gated ion channel protein family. The encoded protein is a n N-methyl-D-aspartate (NMDA) receptor subunit. NMDA receptors are both ligand-gated and voltage-dependent, and are involved in long-term potentiation, an activity-dependent increase in the efficiency of synaptic transmission thought to underlie certain kinds of memory and learning. These receptors are permeable to calcium ions, and activation results in a calcium influx into post-synaptic cells, which results in the activation of several signaling cascades. Disruption of this gene is associated with focal epilepsy and speech disorder with or without mental retardation. Alternative splicing results in multiple transcript variants.
基因ID	2903
基因名	GRIN2A
Swiss	Q12879
别名	EPND;FESD;GluN2A;LKS;NMDAR2A;NR2A;GRIN2A;NMDA 2A

产品验证



Western blot analysis of NMDAR2A expressed in Mouse brain,Rat brain using NMDAR2A Rabbit pAb at 1:1000. Secondary antibody: HRP Goat Anti-Rabbit IgG (H+L) at 1:5000. Lysates/proteins: 30ug per lane. Blocking buffer: 5% non-fat dry milk in TBST. Detection: ECL Enhanced Kit. Exposure time: 120s.

实验步骤

访问官网浏览详情: www.ablybio.cn