

Phospho-p38 MAPK-Y182 Rabbit pAb

货号: **AYP11253**

产品信息

反应	Human,Mouse,Rat
宿主	Rabbit
克隆性	Polyclonal
预测反应	IHC: A549,Mouse kidney WB: A549,Mouse kidney , Rattus norvegicus , Homo sapiens , Mus musculus , Bos taurus
应用	WB IHC
推荐浓度	WB: 1:500 - 1:1000 IHC: 1:50 - 1:200
理论分子量	29kDa/34kDa/35kDa/41kDa
实测分子量	42KDa
形式	Liquid
保存条件	Store at -20°C. Avoid freeze / thaw cycles. Buffer: PBS with 0.05% proclin300,50% glycerol,pH7.3.
偶联物	Unconjugated
阳性对照	293T
细胞定位	Cytoplasm,Nucleus
纯化	Affinity purification

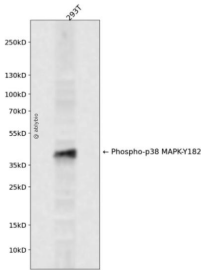
抗原信息

抗原信息	A synthetic phosphorylated peptide around Y182 of human MAPK (NP_620581.1).
序列	TGYVA

靶点信息

研究背景	The protein encoded by this gene is a member of the MAP kinase family. MAP kinases act as an integration point for multiple biochemical signals, and are involved in a wide variety of cellular processes such as proliferation, differentiation, transcription regulation and development. This kinase is activated by various environmental stresses and proinflammatory cytokines. The activation requires its phosphorylation by MAP kinase kinases (MKKs), or its autophosphorylation triggered by the interaction of MAP3K7IP1/TAB1 protein with this kinase. The substrates of this kinase include transcription regulator ATF2, MEF2C, and MAX, cell cycle regulator CDC25B, and tumor suppressor p53, which suggest the roles of this kinase in stress related transcription and cell cycle regulation, as well as in genotoxic stress response. Four alternatively spliced transcript variants of this gene encoding distinct isoforms have been reported.
基因ID	1432
基因名	MAPK14
Swiss	Q16539
别名	MAPK14;CSBP;CSBP1;CSBP2;CSPB1;EXIP;Mxi2;PRKM14;PRKM15;RK;SAPK2A;p38;p38ALPHA;p38 MAPK

产品验证



Western blot analysis of Phospho-p38 MAPK-Y182 expressed in 293T using Phospho-p38 MAPK-Y182 Rabbit pAb at 1:1000. Secondary antibody: HRP Goat Anti-Rabbit IgG (H+L) at 1:5000. Lysates/proteins: 30ug per lane. Blocking buffer: 5% non-fat dry milk in TBST. Detection: ECL Enhanced Kit. Exposure time: 120s.

实验步骤

访问官网浏览详情: www.ablybio.cn