

HSP60/HSPD1 Rabbit pAb

货号: **AYP11246**

产品信息

反应	Human,Mouse,Rat
宿主	Rabbit
克隆性	Polyclonal
预测反应	WB: Mus musculus , Homo sapiens , Gallus gallus , Sus scrofa IF: Mus musculus
应用	WB IHC IF/ICC IP
推荐浓度	WB: 1:500 - 1:2000 IHC: 1:50 - 1:200 IF/ICC: 1:50 - 1:100 IP: 1:50 - 1:200
理论分子量	17kDa/61kDa
实测分子量	61kDa
形式	Liquid
保存条件	Store at -20°C. Avoid freeze / thaw cycles. Buffer: PBS with 0.02% sodium azide,50% glycerol,pH7.3.
偶联物	Unconjugated
阳性对照	HeLa,Jurkat,K-562,Mouse kidney,Mouse liver,Mouse thymus,Rat heart
细胞定位	Mitochondrion matrix
纯化	Affinity purification

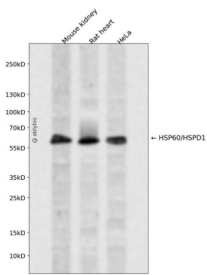
抗原信息

抗原信息	Recombinant fusion protein containing a sequence corresponding to amino acids 27-240 of human HSP60 /HSPD1 (NP_002147.2).
序列	AKDVKFGADARALMLQGVDLLADAVAVTMGPKGRTVIIIQSWGSPKVTKDGVTVAKSIDLKDKYKNIGAKLVQDVANNT NEEAGDGTATATVLARSIKEGFEKISKGANPVEIRRGVMLAVDAVIAELKKQSKPVTTPEEIAQVATISANGDKEIGNIISDA MKKVGRKGVITVKDGKTLNDELEIIEGMKFDRGYISPYFINTSKGQKCEFQ

靶点信息

研究背景	This gene encodes a member of the chaperonin family. The encoded mitochondrial protein may function as a signaling molecule in the innate immune system. This protein is essential for the folding and assembly of newly imported proteins in the mitochondria. This gene is adjacent to a related family member and the region between the 2 genes functions as a bidirectional promoter. Several pseudogenes have been associated with this gene. Two transcript variants encoding the same protein have been identified for this gene. Mutations associated with this gene cause autosomal recessive spastic paraplegia 13.
基因ID	3329
基因名	HSPD1
Swiss	P10809
别名	HSPD1;CPN60;GROEL;HLD4;HSP-60;HSP60;HSP65;HuCHA60;SPG13;Hsp60

产品验证



Western blot analysis of HSP60/HSPD1 expressed in Mouse kidney,Rat heart,HeLa using HSP60/HSPD1 Rabbit pAb at 1:1000. Secondary antibody: HRP Goat Anti-Rabbit IgG (H+L) at 1:5000. Lysates/proteins: 30ug per lane. Blocking buffer: 5% non-fat dry milk in TBST. Detection: ECL Enhanced Kit. Exposure time: 120s.

实验步骤

访问官网浏览详情: www.ablybio.cn