

CYR61 Rabbit pAb

货号: AYP11242

产品信息

反应	Human,Mouse,Rat
宿主	Rabbit
克隆性	Polyclonal
预测反应	WB: Homo sapiens , Chlorocebus aethiops , Mus musculus qRT-PCR: Mus musculus IHC: Mus musculus
应用	WB IF/ICC
推荐浓度	WB: 1:500 - 1:1000 IF/ICC: 1:50 - 1:200
理论分子量	42kDa
实测分子量	41KDa
形式	Liquid
保存条件	Store at -20°C. Avoid freeze / thaw cycles. Buffer: PBS with 0.05% proclin300,50% glycerol,pH7.3.
偶联物	Unconjugated
阳性对照	HeLa,Mouse heart,Rat lung
细胞定位	Secreted
纯化	Affinity purification

抗原信息

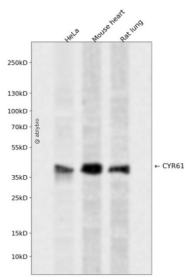
抗原信息	A synthetic peptide corresponding to a sequence within amino acids 120-220 of human CYR61 (NP_001545.2).
序列	QCTCIDGAVGCIPLCPQELSLPNLGCNPRLVKVTGQCCEEWVCEDESIKDPMEDQDGLLGKELGFDASEVELTRNNELIAVGKGSLLKRLPVFGMEPRIL

靶点信息

研究背景	The secreted protein encoded by this gene is growth factor-inducible and promotes the adhesion of endothelial cells. The encoded protein interacts with several integrins and with heparan sulfate proteoglycan. This protein also plays a role in cell proliferation, differentiation, angiogenesis, apoptosis, and extracellular matrix formation.
------	--

基因ID	3491
基因名	CYR61
Swiss	O00622
别名	CYR61;CCN1;GIG1;IGFBP10

产品验证



Western blot analysis of CYR61 expressed in HeLa, Mouse heart, Rat lung using CYR61 Rabbit pAb at 1:1000. Secondary antibody: HRP Goat Anti-Rabbit IgG (H+L) at 1:5000. Lysates/proteins: 30ug per lane. Blocking buffer: 5% non-fat dry milk in TBST. Detection: ECL Enhanced Kit. Exposure time: 120s.

实验步骤

访问官网浏览详情: www.ablybio.cn