

# SLC5A1 Rabbit pAb

货号: **AYP11239**

## 产品信息

反应	Human,Mouse,Rat
宿主	Rabbit
克隆性	Polyclonal
预测反应	<b>WB:</b> Mus musculus , Sus scrofa , Rattus norvegicus <b>IHC:</b> Gallus gallus
应用	<a href="#">WB</a>
推荐浓度	<b>WB:</b> 1:100 - 1:500
理论分子量	60kDa/73kDa
实测分子量	73KDa
形式	Liquid
保存条件	Store at -20°C. Avoid freeze / thaw cycles. Buffer: PBS with 0.05% proclin300,50% glycerol,pH7.3.
偶联物	Unconjugated
阳性对照	293T
细胞定位	Membrane,Multi-pass membrane protein
纯化	Affinity purification

## 抗原信息

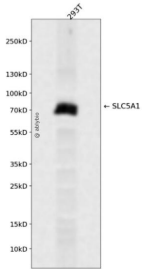
抗原信息	A synthetic peptide corresponding to a sequence within amino acids 350-450 of human SLC5A1 (NP_000334.1).
序列	ECEKYCGTKVGGCTNIAYPPTLVVELMPNGLRGLMLSVMLASLMSSLTSIFNSASTLFTMDIYAKVRKRASEKELMIAGRLFILVLIGISIAWVPIVQSAQSG

## 靶点信息

研究背景	This gene encodes a member of the sodium-dependent glucose transporter (SGLT) family. The encoded integral membrane protein is the primary mediator of dietary glucose and galactose uptake from the intestinal lumen. Mutations in this gene have been associated with glucose-galactose malabsorption. Multiple transcript variants encoding different isoforms have been found for this gene.
基因ID	6523

基因名	SLC5A1
Swiss	P13866
别名	SLC5A1;D22S675;NAGT;SGLT1

## 产品验证



Western blot analysis of SLC5A1 expressed in 293T using SLC5A1 Rabbit pAb at 1:1000. Secondary antibody: HRP Goat Anti-Rabbit IgG (H+L) at 1:5000. Lysates/proteins: 30ug per lane. Blocking buffer: 5% non-fat dry milk in TBST. Detection: ECL Enhanced Kit. Exposure time: 120s.

## 实验步骤

访问官网浏览详情: [www.ablybio.cn](http://www.ablybio.cn)