

# IGF1 Rabbit pAb

货号: **AYP11215**

## 产品信息

|       |   |
|-------|---|
| 反应    | Human,Mouse,Rat   |
| 宿主    | Rabbit  |
| 克隆性   | Polyclonal  |
| 预测反应  | <b>WB:</b> Mus musculus , Homo sapiens , Sus scrofa , Ctenopharyngodon idellus<br><b>IF:</b> Mus musculus |
| 应用    | <a href="#">WB</a> <a href="#">IHC</a>  |
| 推荐浓度  | <b>WB:</b> 1:500 - 1:2000<br><b>IHC:</b> 1:50 - 1:100   |
| 理论分子量 | 15kDa/17kDa/21kDa   |
| 实测分子量 | 18kDa   |
| 形式    | Liquid  |
| 保存条件  | Store at -20°C. Avoid freeze / thaw cycles.<br>Buffer: PBS with 0.01% thiomersal,50% glycerol,pH7.3.      |
| 偶联物   | Unconjugated  |
| 阳性对照  | U-87MG,SKOV3,HeLa,Mouse liver,Mouse testis,Rat testis   |
| 细胞定位  | Secreted  |
| 纯化    | Affinity purification   |

## 抗原信息

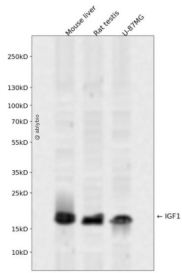
|      |   |
|------|---|
| 抗原信息 | A synthetic peptide corresponding to a sequence within amino acids 50-150 of human IGF1 (NP_000609.1).    |
| 序列   | PETLCGAELVDALQFVCGDRGFYFNKPTGYGSSRRAPQTGIVDECCFRSCDLRRLEMYCAPLKPAKSARSVRAQRHTDM<br>PKTQKEVHLKNASRGSGAGNKN |

## 靶点信息

|      |   |
|------|---|
| 研究背景 | The protein encoded by this gene is similar to insulin in function and structure and is a member of a family of proteins involved in mediating growth and development. The encoded protein is processed from a precursor, bound by a specific receptor, and secreted. Defects in this gene are a cause of insulin-like growth factor I deficiency. Alternative splicing results in multiple transcript variants encoding different isoforms that may undergo similar processing to generate mature protein. |
|------|---|

|       |                     |
|-------|---------------------|
| 基因ID  | 3479                |
| 基因名   | IGF1                |
| Swiss | P05019              |
| 别名    | IGF1;IGF-I;IGFI;MGF |

## 产品验证



Western blot analysis of IGF1 expressed in Mouse liver,Rat testis,U-87MG using IGF1 Rabbit pAb at 1:10 00. Secondary antibody: HRP Goat Anti-Rabbit IgG (H+L) at 1:5000. Lysates/proteins: 30ug per lane. Bl ocking buffer: 5% non-fat dry milk in TBST. Detection: ECL Enhanced Kit. Exposure time: 120s.

## 实验步骤

访问官网浏览详情: [www.ablybio.cn](http://www.ablybio.cn)