

EMR1 Rabbit pAb

货号: **AYP11214**

产品信息

反应	Human,Mouse,Rat
宿主	Rabbit
克隆性	Polyclonal
预测反应	WB: Mus musculus IHC: Mus musculus , mouse IF: Rattus norvegicus , Mus musculus , mmu
应用	WB IF/ICC
推荐浓度	WB: 1:100 - 1:500 IF/ICC: 1:50 - 1:200
理论分子量	78kDa/82kDa/90kDa/95kDa/97kDa
实测分子量	160KDa
形式	Liquid
保存条件	Store at -20°C. Avoid freeze / thaw cycles. Buffer: PBS with 0.01% thiomersal,50% glycerol,pH7.3.
偶联物	Unconjugated
阳性对照	Mouse lung
细胞定位	Cell membrane,Multi-pass membrane protein
纯化	Affinity purification

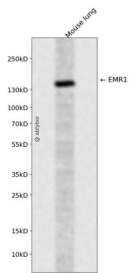
抗原信息

抗原信息	Recombinant fusion protein containing a sequence corresponding to amino acids 477-596 of human EMR 1 (NP_001965.3).
序列	GVAFVSVFGMESVLNERFFKDHQAPLTTSEIKLMNSRVVGGIMTGEKKDGFSDPIIYTLNMQKQKFERPICVSWSTDVK GGRWTSFGCVILEASETYTICSCNQMANLAVIMASGEL

靶点信息

研究背景	This gene encodes a protein that has a domain resembling seven transmembrane G protein-coupled hormone receptors (7TM receptors) at its C-terminus. The N-terminus of the encoded protein has six EGF-like modules, separated from the transmembrane segments by a serine/threonine-rich domain, a feature reminiscent of mucin-like, single-span, integral membrane glycoproteins with adhesive properties. Multiple alternatively spliced transcript variants encoding different isoforms have been found for this gene.
基因ID	2015
基因名	ADGRE1
Swiss	Q14246
别名	ADGRE1;EMR1;TM7LN3;F4/80

产品验证



Western blot analysis of EMR1 expressed in Mouse lung using EMR1 Rabbit pAb at 1:1000. Secondary antibody: HRP Goat Anti-Rabbit IgG (H+L) at 1:5000. Lysates/proteins: 30ug per lane. Blocking buffer: 5% non-fat dry milk in TBST. Detection: ECL Enhanced Kit. Exposure time: 120s.

实验步骤

访问官网浏览详情: www.ablybio.cn