

Phospho-MLKL-T357/S358/S360 Rabbit pAb

货号: AYP11210

产品信息

反应	Human,Mouse,Rat
宿主	Rabbit
克隆性	Polyclonal
预测反应	WB: Gallus gallus , Homo sapiens , Mus musculus , Rattus norvegicus ICH: Mus musculus IF: Mus musculus ELISA: Mus musculus
应用	WB
推荐浓度	WB: 1:500 - 1:2000
理论分子量	53kDa/54kDa
实测分子量	54kDa
形式	Liquid
保存条件	Store at -20°C. Avoid freeze / thaw cycles. Buffer: PBS with 0.05% proclin300,50% glycerol,pH7.3.
偶联物	Unconjugated
阳性对照	NIH/3T3
细胞定位	Cell membrane,Cytoplasm
纯化	Affinity purification

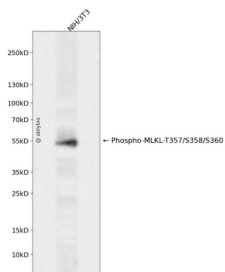
抗原信息

抗原信息	A synthetic phosphorylated peptide around T357 & S358 & S360 of human MLKL (NP_689862.1).
序列	RKTQTSM SLGT

靶点信息

研究背景	This gene belongs to the protein kinase superfamily. The encoded protein contains a protein kinase-like domain; however, is thought to be inactive because it lacks several residues required for activity. This protein plays a critical role in tumor necrosis factor (TNF)-induced necroptosis, a programmed cell death process, via interaction with receptor-interacting protein 3 (RIP3), which is a key signaling molecule in necroptosis pathway. Inhibitor studies and knockdown of this gene inhibited TNF-induced necrosis. High levels of this protein and RIP3 are associated with inflammatory bowel disease in children. Alternatively spliced transcript variants have been described for this gene. [provided by RefSeq, Sep 2015]
基因ID	197259
基因名	MLKL
Swiss	Q8NB16
别名	hMLKL;MLKL

产品验证



Western blot analysis of Phospho-MLKL-T357/S358/S360 expressed in NIH/3T3 using Phospho-MLKL-T357/S358/S360 Rabbit pAb at 1:1000. Secondary antibody: HRP Goat Anti-Rabbit IgG (H+L) at 1:5000. Lysates/proteins: 30ug per lane. Blocking buffer: 5% non-fat dry milk in TBST. Detection: ECL Enhanced Kit. Exposure time: 120s.

实验步骤

访问官网浏览详情: www.ablybio.cn