

— ABLYBIO, Help Your Research



# MYH7/ $\beta$ -MHC Rabbit pAb

货号: **AYP11171**

## 产品信息

反应	Human,Mouse,Rat
宿主	Rabbit
克隆性	Polyclonal
预测反应	<b>WB:</b> Rattus norvegicus , Mus musculus , Homo sapiens , Capra hircus , Sus scrofa <b>IF:</b> Capra hircus , Mus musculus <b>WB, IP:</b> Mus musculus
应用	WB IF/ICC
推荐浓度	<b>WB:</b> 1:100 - 1:500 <b>IF/ICC:</b> 1:50 - 1:200
理论分子量	223kDa
实测分子量	250KDa
形式	Liquid
保存条件	Store at -20°C. Avoid freeze / thaw cycles. Buffer: PBS with 0.05% proclin300,50% glycerol,pH7.3.
偶联物	Unconjugated
阳性对照	Mouse heart
细胞定位	Cytoplasm,myofibril
纯化	Affinity purification

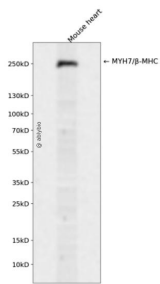
## 抗原信息

抗原信息	A synthetic peptide corresponding to a sequence within amino acids 1700-1800 of human MYH7/ $\beta$ -MHC (NP_000248.2).
------	---

## 靶点信息

研究背景	Muscle myosin is a hexameric protein containing 2 heavy chain subunits, 2 alkali light chain subunits, and 2 regulatory light chain subunits. This gene encodes the beta (or slow) heavy chain subunit of cardiac myosin. It is expressed predominantly in normal human ventricle. It is also expressed in skeletal muscle tissues rich in slow-twitch type I muscle fibers. Changes in the relative abundance of this protein and the alpha (or fast) heavy subunit of cardiac myosin correlate with the contractile velocity of cardiac muscle. Its expression is also altered during thyroid hormone depletion and hemodynamic overloading. Mutations in this gene are associated with familial hypertrophic cardiomyopathy, myosin storage myopathy, dilated cardiomyopathy, and Laing early-onset distal myopathy.
基因ID	4625
基因名	MYH7
Swiss	P12883 ( <a href="https://www.uniprot.org/uniprotkb/P12883/entry">https://www.uniprot.org/uniprotkb/P12883/entry</a> )
别名	MYH7,CMD1S,CMH1,MPD1,MYHCB,SPMD,SPMM,myosin-7,MYH7/ $\beta$ -MHC Rabbit pAb,Myosin heavy chain 7, Myosin heavy chain slow isoform,Myosin heavy chain,cardiac muscle beta isoform

## 产品验证



Western blot analysis of MYH7/ $\beta$ -MHC expressed in Mouse heart using MYH7/ $\beta$ -MHC Rabbit pAb at 1:1000. Secondary antibody: HRP Goat Anti-Rabbit IgG (H+L) at 1:5000. Lysates/proteins: 30ug per lane. Blocking buffer: 5% non-fat dry milk in TBST. Detection: ECL Enhanced Kit. Exposure time: 120s.

## 实验步骤

访问官网浏览详情: [www.ablybio.cn](http://www.ablybio.cn) (<https://www.ablybio.cn/www.ablybio.cn>)