

— ABLYBIO, Help Your Research



Phospho-FAK-Y397 Rabbit pAb

货号: **AYP11169**

产品信息

| | |
|-------|---|
| 反应 | Human,Mouse,Rat |
| 宿主 | Rabbit |
| 克隆性 | Polyclonal |
| 预测反应 | WB: Mus musculus , Homo sapiens , Rattus norvegicus IHC: Mus musculus , Homo sapiens |
| 应用 | WB |
| 推荐浓度 | WB: 1:100 - 1:500 |
| 理论分子量 | 39kDa/48kDa/63kDa/99kDa/114kDa/119kDa/120kDa |
| 实测分子量 | 125KDa |
| 形式 | Liquid |
| 保存条件 | Store at -20°C. Avoid freeze / thaw cycles. Buffer: PBS with 0.02% sodium azide,50% glycerol,pH7.3. |
| 偶联物 | Unconjugated |
| 阳性对照 | A-549 |
| 细胞定位 | Cell junction,Cell membrane,Cytoplasm,Cytoplasmic side,Nucleus,Peripheral membrane protein,cell cortex,centrosome,cytoskeleton,focal adhesion,microtubule organizing center |
| 纯化 | Affinity purification |

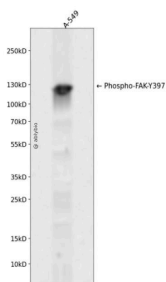
抗原信息

| | |
|------|--|
| 抗原信息 | A synthetic phosphorylated peptide around Y397 of human FAK (NP_722560.1). |
|------|--|

靶点信息

| | |
|-------|--|
| 研究背景 | This gene encodes a cytoplasmic protein tyrosine kinase which is found concentrated in the focal adhesions that form between cells growing in the presence of extracellular matrix constituents. The encoded protein is a member of the FAK subfamily of protein tyrosine kinases but lacks significant sequence similarity to kinases from other subfamilies. Activation of this gene may be an important early step in cell growth and intracellular signal transduction pathways triggered in response to certain neural peptides or to cell interactions with the extracellular matrix. Several transcript variants encoding different isoforms have been found for this gene. |
| 基因ID | 5747 |
| 基因名 | PTK2 |
| Swiss | Q05397 (https://www.uniprot.org/uniprotkb/Q05397/entry) |
| 别名 | FADK,FAK,FAK1,FRNK,PPP1R71,p125FAK,pp125FAK,PTK2,Phospho-FAK-Y397 Rabbit pAb,Focal adhesion kinase-related nonkinase,Protein phosphatase 1 regulatory subunit 71,Protein-tyrosine kinase 2 |

产品验证



Western blot analysis of Phospho-FAK-Y397 expressed in A-549 using Phospho-FAK-Y397 Rabbit pAb at 1:1000. Secondary antibody: HRP Goat Anti-Rabbit IgG (H+L) at 1:5000. Lysates/proteins: 30ug per lane. Blocking buffer: 5% non-fat dry milk in TBST. Detection: ECL Enhanced Kit. Exposure time: 120s.

实验步骤

访问官网浏览详情: www.ablybio.cn (<https://www.ablybio.cn/www.ablybio.cn>)