

— ABLYBIO, Help Your Research



# SETD2 Rabbit pAb

货号: **AYP11164**

## 产品信息

|       |  |
|-------|--|
| 反应    | Human,Mouse,Rat  |
| 宿主    | Rabbit   |
| 克隆性   | Polyclonal   |
| 预测反应  | <b>WB:</b> NIH3T3 , 293T , HeLa , Human , Homo sapiens , Mus musculus , Rattus norvegicus<br><b>IF:</b> A549 , Rattus norvegicus , Mus musculus<br><b>ChIP:</b> Human , Homo sapiens<br><b>IP:</b> Homo sapiens<br><b>IHC:</b> Rattus norvegicus |
| 应用    | WB IF/ICC IP   |
| 推荐浓度  | <b>WB:</b> 1:500 - 1:1000<br><b>IF/ICC:</b> 1:50 - 1:200<br><b>IP:</b> 1:500 - 1:1000  |
| 理论分子量 | 175kDa/192kDa/287kDa   |
| 实测分子量 | 288KDa   |
| 形式    | Liquid   |
| 保存条件  | Store at -20°C. Avoid freeze / thaw cycles.<br>Buffer: PBS with 0.05% proclin300,50% glycerol,pH7.3.   |
| 偶联物   | Unconjugated   |
| 阳性对照  | Mouse spleen   |
| 细胞定位  | Chromosome,Nucleus   |
| 纯化    | Affinity purification  |

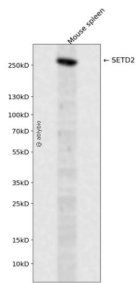
## 抗原信息

|      |  |
|------|--|
| 抗原信息 | A synthetic peptide corresponding to a sequence within amino acids 1300-1400 of human SETD2 (NP_054878.5). |
|------|--|

## 靶点信息

|       |   |
|-------|---|
| 研究背景  | Huntington's disease (HD), a neurodegenerative disorder characterized by loss of striatal neurons, is caused by an expansion of a polyglutamine tract in the HD protein huntingtin. This gene encodes a protein belonging to a class of huntingtin interacting proteins characterized by WW motifs. This protein is a histone methyltransferase that is specific for lysine-36 of histone H3, and methylation of this residue is associated with active chromatin. This protein also contains a novel transcriptional activation domain and has been found associated with hyperphosphorylated RNA polymerase II. |
| 基因ID  | 29072   |
| 基因名   | SETD2   |
| Swiss | Q9BYW2 ( <a href="https://www.uniprot.org/uniprotkb/Q9BYW2/entry">https://www.uniprot.org/uniprotkb/Q9BYW2/entry</a> )  |
| 别名    | SETD2,HBP231,HIF-1,HIP-1,HSPC069,HYPB,KMT3A,LLS,SET2,p231HBP,SETD2 Rabbit pAb,Huntingtin yeast partner B,Huntingtin-interacting protein 1,Huntingtin-interacting protein B,Lysine N-methyltransferase 3A, Protein-lysine N-methyltransferase SETD2,SET domain-containing protein 2,HIF1   |

## 产品验证



Western blot analysis of SETD2 expressed in Mouse spleen using SETD2 Rabbit pAb at 1:1000. Secondary antibody: HRP Goat Anti-Rabbit IgG (H+L) at 1:5000. Lysates/proteins: 30ug per lane. Blocking buffer: 5% non-fat dry milk in TBST. Detection: ECL Enhanced Kit. Exposure time: 120s.

## 实验步骤

访问官网浏览详情: [www.ablybio.cn](http://www.ablybio.cn) (<https://www.ablybio.cn/www.ablybio.cn>)