

S6 Ribosomal Protein (RPS6) Rabbit pAb

货号: **AYP11141**

产品信息

反应	Human,Mouse,Rat
宿主	Rabbit
克隆性	Polyclonal
预测反应	WB: Yeast , Mus musculus , Sus scrofa , Homo sapiens IHC: Mus musculus
应用	WB IHC IF/ICC
推荐浓度	WB: 1:500 - 1:1000 IHC: 1:50 - 1:200 IF/ICC: 1:50 - 1:200
理论分子量	28kDa
实测分子量	32KDa
形式	Liquid
保存条件	Store at -20°C. Avoid freeze / thaw cycles. Buffer: PBS with 0.01% thiomersal,50% glycerol,pH7.3.
偶联物	Unconjugated
阳性对照	SKOV3,Raji,HT-29,A-431,Mouse heart
细胞定位	cytoplasm,cytoplasmic ribonucleoprotein granule,cytosol,cytosolic ribosome,endoplasmic reticulum,nucleolus,nucleoplasm,nucleus,perinuclear region of cytoplasm
纯化	Affinity purification

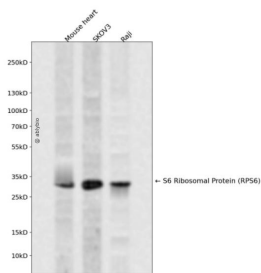
抗原信息

抗原信息	A synthetic peptide corresponding to a sequence within amino acids 1-100 of human RPS6 (NP_001001.2)
序列	MKLNISFPATGCQKLEIYVDDERKLRITFYEKRMATEVAADALGEEWKGYYVVRISGGNDKQGFPMKQGVLTHTGRVRLLSKG HSCYRPRRTGERKRKSVRGC

靶点信息

研究背景	Ribosomes, the organelles that catalyze protein synthesis, consist of a small 40S subunit and a large 60S subunit. Together these subunits are composed of 4 RNA species and approximately 80 structurally distinct proteins. This gene encodes a cytoplasmic ribosomal protein that is a component of the 40S subunit. The protein belongs to the S6E family of ribosomal proteins. It is the major substrate of protein kinases in the ribosome, with subsets of five C-terminal serine residues phosphorylated by different protein kinases. Phosphorylation is induced by a wide range of stimuli, including growth factors, tumor-promoting agents, and mitogens. Dephosphorylation occurs at growth arrest. The protein may contribute to the control of cell growth and proliferation through the selective translation of particular classes of mRNA. As is typical for genes encoding ribosomal proteins, there are multiple processed pseudogenes of this gene dispersed throughout the genome.
基因ID	6194
基因名	RPS6
Swiss	P62753
别名	RPS6;S6;RPS6

产品验证



Western blot analysis of S6 Ribosomal Protein (RPS6) expressed in Mouse heart, SKOV3, Raji using S6 Ribosomal Protein (RPS6) Rabbit pAb at 1:1000. Secondary antibody: HRP Goat Anti-Rabbit IgG (H+L) at 1:5000. Lysates/proteins: 30ug per lane. Blocking buffer: 5% non-fat dry milk in TBST. Detection: ECL Enhanced Kit. Exposure time: 120s.

实验步骤

访问官网浏览详情: www.ablybio.cn