

MUC2 Rabbit pAb

货号: AYP11120

产品信息

| | |
|-------|---|
| 反应 | Human,Mouse,Rat |
| 宿主 | Rabbit |
| 克隆性 | Polyclonal |
| 预测反应 | IF: Human bone marrow cancer cell , Sus scrofa , Mus musculus , Homo sapiens WB: Human chronic myeloid leukemia cells , Mus musculus , Misgurnus anguillicaudatus , Homo sapiens , Rattus norvegicus IHC: Rattus norvegicus , Mus musculus ELISA: Homo sapiens |
| 应用 | WB IHC IF/ICC |
| 推荐浓度 | WB: 1:500 - 1:1000 IHC: 1:100 - 1:500 IF/ICC: 1:50 - 1:200 |
| 理论分子量 | 540kDa |
| 实测分子量 | 110KDa/130KDa |
| 形式 | Liquid |
| 保存条件 | Store at -20°C. Avoid freeze / thaw cycles. Buffer: PBS with 0.05% proclin300,50% glycerol,pH7.3. |
| 偶联物 | Unconjugated |
| 阳性对照 | HT-29,Mouse small intestine,Rat large intestine,Rat small intestine |
| 细胞定位 | Secreted |
| 纯化 | Affinity purification |

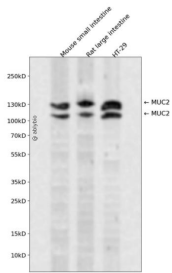
抗原信息

| | |
|------|--|
| 抗原信息 | Recombinant fusion protein containing a sequence corresponding to amino acids 21-200 of human MUC2 (NP_002448.4). |
| 序列 | SELQTEGRTRNHGHNV CSTWGNFHYKTFDGDVFRFPGLCDYNFASDCRGSYKEFAVHLKRGPGQAEAPAGVESILLTIK DDTIYLRHLAVLNGAVVSTPHYSPLLLIEKSDAYTKVYSRAGLTLMWNREDALMLELDTKFRNHTCGLCGDYNGLQSYSE FLSDGVLFSPLEFGNMQKIN |

靶点信息

| | |
|-------|--|
| 研究背景 | This gene encodes a member of the mucin protein family. Mucins are high molecular weight glycoproteins produced by many epithelial tissues. The protein encoded by this gene is secreted and forms an insoluble mucous barrier that protects the gut lumen. The protein polymerizes into a gel of which 80% is composed of oligosaccharide side chains by weight. The protein features a central domain containing tandem repeats rich in threonine and proline that varies between 50 and 115 copies in different individuals. Alternatively spliced transcript variants of this gene have been described, but their full-length nature is not known. |
| 基因ID | 4583 |
| 基因名 | |
| Swiss | Q02817 |
| 别名 | MUC2;MLP;MUC-2;SMUC;mucin-2 |

产品验证



Western blot analysis of MUC2 expressed in Mouse small intestine,Rat large intestine,HT-29 using MUC2 Rabbit pAb at 1:1000. Secondary antibody: HRP Goat Anti-Rabbit IgG (H+L) at 1:5000. Lysates/proteins: 30ug per lane. Blocking buffer: 5% non-fat dry milk in TBST. Detection: ECL Enhanced Kit. Exposure time: 120s.

实验步骤

访问官网浏览详情: www.ablybio.cn