

# Mannose Receptor/CD206 Rabbit pAb

货号: **AYP11113**

## 产品信息

反应	Mouse,Rat
宿主	Rabbit
克隆性	Polyclonal
预测反应	<b>IF:</b> Mus musculus , Homo sapiens , Sus domesticus <b>WB:</b> Mus musculus , Homo sapiens , Rattus norvegicus <b>IHC:</b> Mus musculus , Rattus norvegicus <b>FC:</b> Homo sapiens
应用	WB
推荐浓度	<b>WB:</b> 1:100 - 1:500
理论分子量	56kDa/166kDa
实测分子量	200KDa
形式	Liquid
保存条件	Store at -20°C. Avoid freeze / thaw cycles. Buffer: PBS with 0.05% proclin300,50% glycerol,pH7.3.
偶联物	Unconjugated
阳性对照	Mouse spleen,Rat liver
细胞定位	Cell membrane,Endosome membrane,Single-pass type I membrane protein
纯化	Affinity purification

## 抗原信息

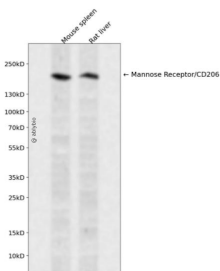
抗原信息	Recombinant fusion protein containing a sequence corresponding to amino acids 19-1389 of human Mannose Receptor/CD206 (NP_002429.1).
------	--

序列	<p>LLDTRQFLIYNEDHKRCVDAVSPSAVQTAACNQDAESQKFRWVSESIQMSVAFKLCGLVPSKTDWVAITLYACDSKSEFQ  KWECKNDTLLGIKGEDLFFNYGNRQEKNIIMLYKSGSLWSRWKIYGTDDNLCSRGYEAMYLLGNANGATCAFPFKFENK  WYADCTSAGRSDGWLWCGTTTDDYDTDKLFGYCPLKFEQSESLWKNKPLTSVSYQINSKALTWHQARKSCQQQNAEL  LSITEIHEQTYLTGLTSSLTSGWLWGLNSLFSNSGWQWSDRSPFRYLNWLPGSPSAEPGKSCVSLNPGKNAKWENLECVQ  KLG YICKGNTT LNSFVIPSESDVPTHCP SQW WPYAGHCYK IHRDEKKIQRDALTT CRKEGGDLTSIHTIEELDFIISQLGYE  PNDELWIGLNDIKIQMYFEWSDGTPVFTFKWLRGEPHENNRQEDCVVMKGGKGYWADRGCEWPLGYICKMKSRSQG  PEIVEVEKGCRCRGWKKHHFYCYMIGHTLSTFAEANQTCNNENAYLTTIEDRYEQAFLT SFVGLRPEKYFWTGLSDIQTGKTF  QWTIEEEVRFTHWNSDMPGRKPGCVAMRTGIAGLWDVLKCDKAKFVCKHWAEGVTHPPKPTTTPEPKCPEDWGAS  SRTSLCFKLYAKGKHEKKTWFESRDFCRALGGDLASINNKEEQTIWRLITASGSYHKLFWLGLTYGSPSEGFTWSDGSP  VSYENWAYGEPNNYQNVEYCGELKGDPTMSWINDINCEHLNNWICQIQKGQTPKPEPTAPQDNPPVTEDGWVVIYKDYQ  YYFSKEKETMDNARAFCKRNFGLVSIQSESEKFLWKYVNRNDAQSAYFIGLLISLDKFAWMDGSKVDYVSWATGEP  NFANEDENCVTMYSNSGFWNINDINCGYPNAFICQRHNSINATTVMPTMPSVPSGCKEGWNFYSNKCFKIFGFMEERKN  WQEARKACIGFGGNLVS IQNEKEQAF LTYHMKDSTFSAWTGLNDVNSEHTFLWTDGRGVHYTNWKGYPGGRRSSLS  YEDADCVVIIGGASNEAGKWMDDTCD SKRGYICQTRSDPLTNPPATIQT DGFVKYKSSYS LMRQKFQWHEAETYCKL  HNSLIASILD PYSNAFAWLQMETSNERVWIALNSLTDNQYTWTDKWRVRYTNWAADEPKLSACVYLDLDGYWKT AH  CNESFYFLCKRSD EIPATEPPQLPGRCPESDHTAWIPFHGH CYIESSYTRNWGQASLECLRMGSSLV SIESAAESSFLSYR  VEPLKSKTNFWIGLFRNVEGTWLVWINNSPVSVNWNTGDPSGERNDCVALHASSGFWSNIHCSSYKGYICKRPKIIDAKP  THELLTTKADTRKMDPSKPSSNVA</p>
----	---

### 靶点信息

研究背景	The recognition of complex carbohydrate structures on glycoproteins is an important part of several biological processes, including cell-cell recognition, serum glycoprotein turnover, and neutralization of pathogens. The protein encoded by this gene is a type I membrane receptor that mediates the endocytosis of glycoproteins by macrophages. The protein has been shown to bind high-mannose structures on the surface of potentially pathogenic viruses, bacteria, and fungi so that they can be neutralized by phagocytic engulfment.
基因ID	4360
基因名	MRC1
Swiss	P22897
别名	MRC1;CD206;CLEC13D;CLEC13DL;MMR;MRC1L1;bA541I19.1;hMR

### 产品验证



Western blot analysis of Mannose Receptor/CD206 expressed in Mouse spleen, Rat liver using Mannose Receptor/CD206 Rabbit pAb at 1:1000. Secondary antibody: HRP Goat Anti-Rabbit IgG (H+L) at 1:5000. Lysates/proteins: 30ug per lane. Blocking buffer: 5% non-fat dry milk in TBST. Detection: ECL Enhanced Kit. Exposure time: 120s.

### 实验步骤

访问官网浏览详情: [www.ablybio.cn](http://www.ablybio.cn)