

CLDN5 Rabbit pAb

货号: AYP11112

产品信息

反应	Human,Mouse,Rat
宿主	Rabbit
克隆性	Polyclonal
预测反应	WB: Mus musculus , Homo sapiens , Rattus norvegicus , Human IF: Mus musculus , Homo sapiens IHC: Rattus norvegicus IF/ICC: Human
应用	WB IF/ICC
推荐浓度	WB: 1:1000 - 1:5000 IF/ICC: 1:50 - 1:200
理论分子量	23kDa
实测分子量	20KDa
形式	Liquid
保存条件	Store at -20°C. Avoid freeze / thaw cycles. Buffer: PBS with 0.05% proclin300,50% glycerol,pH7.3.
偶联物	Unconjugated
阳性对照	Mouse lung
细胞定位	Cell junction,Cell membrane,Multi-pass membrane protein,tight junction
纯化	Affinity purification

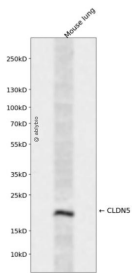
抗原信息

抗原信息	A synthetic peptide corresponding to a sequence within amino acids 119-218 of human CLDN5 (NP_001349995.1).
序列	LTGGVLYLFCGLLALVPLCWFANIVVREFYDPSVPVSQKYELGAALYIGWAATALLMVGCCLLCCGAWVCTGRPDLSFPVKYSAPRRPTATGDYDKKNYV

靶点信息

研究背景	This gene encodes a member of the claudin family. Claudins are integral membrane proteins and components of tight junction strands. Tight junction strands serve as a physical barrier to prevent solutes and water from passing freely through the paracellular space between epithelial or endothelial cell sheets. Mutations in this gene have been found in patients with velocardiofacial syndrome. Alternatively spliced transcript variants encoding the same protein have been found for this gene.
基因ID	7122
基因名	CLDN5
Swiss	O00501
别名	CLDN5;AWAL;BEC1;CPETRL1;TMVCF;claudin-5

产品验证



Western blot analysis of CLDN5 expressed in Mouse lung using CLDN5 Rabbit pAb at 1:1000. Secondary antibody: HRP Goat Anti-Rabbit IgG (H+L) at 1:5000. Lysates/proteins: 30ug per lane. Blocking buffer: 5% non-fat dry milk in TBST. Detection: ECL Enhanced Kit. Exposure time: 120s.

实验步骤

访问官网浏览详情: www.ablybio.cn